



Hoof Print

R2-DTour - Ride The Regions



*Two Ladies,
Two Horses,
Six Regions...*



Question for
a Trainer

Mounting
Advantage -
Better for
the Horse

Ride Benefits
Wild Mustang
Program

Once Uh
Pony Time

We Can All
Make Good Maps

Proposed Rule
Changes

And
Much More!



Carri~Lite Corrals[®]

Official Portable Corral of the NATRC and endorsed by current world leading barrel racer and 4x NFR qualifier Fallon Taylor!



This 8 panel portable stall makes an approximate 12 ft “stand alone” round pen or larger area of confinement if attached to a trailer with included trailer brackets. Carri-Lite Corrals have four rails for maximum containment, security and visibility. Horses cannot get their heads through the rails thus preventing accidents. These panels provide innovation and convenience in transporting and storage where storage is a premium. The panels’ unique telescopic design allows each panel to collapse down to 1/4th its size. This portable corral can fit in the trailer mid-tack area, trailer hay racks, trailer mangers, truck racks, truck beds, and even a back seat!

Made of high impact engineering grade HDPE resin. This resin is resilient and provides flexibility so panels will not dent, crack or chip (They are not pvc). Metal panels can dent and will not store compactly once dented. The panels connect with simple rods and any panel can become a gate; just unpin and swing open. With ultrasonic welded couplers and hydraulic pressed fittings, the panels are durable and will provide years of maintenance free service.

Carri-Lite Corrals come complete with a 30-day customer satisfaction and a 1-year manufacturer warranty. Panels ship regular UPS ground for delivery right to your door. (No over size charges.)

MADE IN THE USA

Standard Unit: (8) Panels, (8) Connecting Rods, (4) Trailer Brackets, (6) Velcro Straps

Panel Size Expanded: 5' 3" length x 51" height

Panel Collapsed Size: 28" x 39" x 2" * Panel Weight: approximately 15 lbs

ShopSpur.com
The best in
ranching supplies

WESLEY ENTERPRISES LLC
www.shopspur.com

490 Mary Jo Road - Silex, MO 63377
888.337.SPUR | carrilite@gmail.com
www.CarriLiteCorrals.com

Hoof Print is the official publication of the North American Trail Ride Conference (NATRC) and is published quarterly. Each issue contains updated information from NATRC committees and board meetings and informative articles on trail riding and horse care.

NATRC and *Hoof Print* are devoted to educating and informing the competitive trail rider. *Hoof Print* in printed form is available by subscription. Please contact the National office for information and rates. Articles may be reprinted from *Hoof Print* with permission from the editor. The following credit line must be used with each reprint:

Reprinted from *Hoof Print*, official publication of the North American Trail Ride Conference, (issue/year).

Contributions are welcome. However, NATRC and *Hoof Print* do not necessarily endorse or support the opinions expressed in printed articles or advertisements. The editor reserves the right to edit material as necessary. No letters to the editor will be printed if not signed. For more information contact the editor (information below).

NATRC and the *Hoof Print* staff are not responsible for errors in spelling of horse and rider names. Artwork and photos used in *Hoof Print* are copyrighted material and may not be copied or used without express written permission from the publisher.

Editorial policy: The editor invites member comments and suggestions. Opinions expressed herein are those of the author and do not necessarily reflect NATRC opinion. Keep all letters to 250 words or less and include name, mailing address and telephone number. Send letters to:

Hoof Print Editor
Laurie Knuutila
907.378.9190

wildroseph@yahoo.com

Please refer all address changes to the NATRC office at the address below:

natrc@natrc.org

or

NATRC
PO Box 224
Sedalia CO 80135

On The Cover: The R2-DTour Team

Left Photo:
Lory Walls & Mikie

Photo by Jim Edmondson,
used with permission

Right Photo:
Karen Kafka & Smokey

Photo by Beni DeMattei,
used with permission



Table of Contents

Summer 2014

2	President's Message	12	Once Uh Pony Time
3	Kudos for First Time Ride Chair	13	Ride Benefits Wild Mustang Program
4	Enhanced Member Services	14	Staying on the Topside...
5	Question For A Trainer	15	We Can All Make Good Maps
6	Cold Hard Truths	18	NBOD Meeting Summary
7	Mounting Advantage - Better for the Horse	23	Proposed Rule Changes for 2015
8	Membership Recruiters Report	27	You'll Pass
9	Investing in the Future	28	Ride Results
10	R2-DTour		

"The mission/vision/philosophy of NATRC has stood us in good stead for almost 52 years now. Sticking with these guidelines has allowed us to become the best at what we do — educating and informing horsemen and horsewomen about how to care for and manage their horses over long distance trail competitions. This is what we do and **No One Does it Better.**" – Kim Cowart

Display Ads

Full page	\$275
Half page	\$150
One-third page	\$100
Quarter page	\$80
One-sixth page	\$50
Ride/Clinic ad	Half Price

Email color 300dpi JPEG ad to
matefey@gmail.com.

Specify *Hoof Print* and topic in the subject line.
Contact NATRC for discounts on consecutive issue ads or ad specifications.

Classified Ads

Up to 20 words	\$10
Annual rate	\$50
Border ad/up to 30 words	\$20
Photo ad/border/ 30 words	\$25

Submission Deadlines

Winter (Dec/Jan/Feb)	Nov. 15
Spring (Mar/Apr/May)	Feb. 15
Summer (Jun/Jul/Aug)	May 15
Fall (Sep/Oct/Nov)	Aug. 15

Please make your check payable to NATRC;
mail ad information with payment to:

Hoof Print, NATRC
PO Box 224
Sedalia CO 80135
303.688.1677

President's Message

Riding with NATRC says something about who you are as a horseperson. It says you like a challenge. It says you like to learn. It says you like to test yourself and your horse and you like to go the distance. And lastly it says you don't just ride your horse, you *train* your horse. (This last sentence paraphrased from my friend Sarah Rinne).

For many of us the best value we've gotten from NATRC has come from the challenges met. It seems that the harder we work for something the more it means. Motivation, satisfaction, and that sense of accomplishment we get from meeting a challenge provide the value from our hard work and effort. Just think on those rides that are most memorable to you. Which ones gave you the greatest sense of accomplishment? Those "Wow, I did it!" rides will stick with us forever. We slide off our horses at the end, hug their neck, and enjoy that heady mix of physical fatigue and grateful accomplishment.

Do any of you folks have stacks of horse magazines with "how-to" training articles tagged? Or shelves of books on

horses, horsemanship, horse care, and distance riding? Do you have equine web sites on your favorites bar for quick access? Do you go to clinics and work with trainers and soak up every scrap of equine related minutia as it comes your way? Of course you do!! Folks who ride with NATRC like to learn, and the desire for constant improvement is almost a mantra amongst our members. Some of us are serious about it to the point of compulsion, and some of us much more casual, but the common thread is the desire to know more than we did. To be better than we were. And so, thank goodness we've found a place to fit right in with folks who share the same passion for learning and for horses. We all end up knowing more than we did because of NATRC.

Going the distance can be accomplished without a competitive format. A relaxing mosey with our friends is often just the ticket after a bad week. But as fun as that can be there lacks that sense of fulfillment, that sense of accomplishment that rides all the way home with us as we relive a ride week-

end. Elation from a great ride spurs us even further, and disappointment from a less than stellar ride is soon replaced by determination to learn from mistakes made. NATRC's competitive format

gives us the opportunity for lessons learned, and once again we find ourselves knowing more than we did.

NATRC riders go the extra mile (pun intended!) when it comes to training their horses. Having a well-trained horse certainly increases the odds with those sneaky old judges, but a more pragmatic reason soon reveals itself. It is just more fun, and likely a more successful weekend when you're riding a horse with power steering. Forty or sixty miles on a jackhammer with bad brakes can make any of us swear off the ponies. But ahhh, the sweet reward and sense of satisfaction when finding old jackhammer now has shocks and air ride suspension along with fingertip control. NATRC riders just love that sense of finesse and polished control and are justifiably proud of their dependable mount. Not only does NATRC give a venue to showcase that skilled riding partner, but we helped you in his development too.

NATRC expects a lot from its riders. We expect you to enjoy a challenge, have a sense of fun and adventure, and have a desire to learn new skills. What we don't expect is for you to ride a certain breed of horse, or ride a certain type of saddle, or dress in any particular fashion. Riding the distance with us says a lot about you as a horseperson. Come as you are and come ride with us. We'll show you the way.

Happy Trails to all,

Kim A. Cowart
President, NATRC





FREE SHIPPING!

*ORDERS OVER \$100 UNDER 10LBS • SOME EXCLUSIONS APPLY

LOYALTY REWARDS

SHOP • EARN • REDEEM

Stay Cool This Summer!



Kerrits Ice Fil
Tights, Shirts,
Tanks & Sleeves



GULPZ
Hydration
Systems



HyperKewl
Vests



Neckbands



Ice Boots



Hydration Belts

FEATURING



THEDISTANCEDEPOT.COM

NATRC National Board Members

Region 1

Angie Meroshnekoff / awhitedog@aol.com
Joe Pimentel / legacyranch1@aol.com
Phil Young, Alt / pbyoung@sunset.net

Region 2

Beni DeMattei / beni2406@hotmail.com
Mary Jo Malone / maryjomalone@msn.com
Bob Insko, Alt / rminsko@gmain.com

Region 3

Sharon Roper / srioper9345@aol.com
Jerry Sims / beth_sims@q.com

Region 4

Elaine Swiss / swissranch@earthlink.net
Larry Gould / landbgould@gmail.com
Jean Green, Alt / jgreen@martineer.net

Region 5

Kim Cowart / kcneverrestranch@gmail.com
Gary Clayton / gclay24251@charter.net
Sallie Kudra, Alt / kudra@clemson.edu

Region 6

Priscilla Lindsey / pris.lindsey@gmail.com
Sarah Rinne / saddle1up@live.com
Erin Glassman, Alt / ejacob716@gmail.com

NATRC National Board Officers

President:

Kim Cowart

kcneverrestranch@gmail.com

Treasurer:

Elaine Swiss

swissranch@earthlink.net

Vice President:

Sarah Rinne

saddle1up@live.com

Executive Administrator:

Laurie DiNatale

natrc@natrc.org



Kudos for First-Time Ride Chair, Clinic and Ride

By Elaine Swiss

Congratulations to First Time Ride Manager, MaryAshley McGibbon, of the NATRC Hill Country Comf-Y Clinic and Classic CTR held March 22-23 at the YMCA Roberts Ranch in Comfort, Texas.

When kicking about the idea of hosting a clinic and competition at this new location just a few months ago, MaryAshley knew what she wanted to achieve: introduce relatively local equestrians, especially youth, to the sport of distance trail riding in a safe, friendly environment and offer them the opportunity to put into practice what they learned at the clinic in a competition the next day. Well, put a checkmark under HUGE SUCCESS!

In a south Texas tri-county area that features easily 100 times as many goats, sheep and cattle than people, 15 new-to-NATRC'ers plus

a few experienced NATRC'ers joined four clinicians to cover all the bases of competitive trail riding. Eleven of those stayed through Sunday to compete, some surprising themselves on how well they did (but not their clinicians who saw the promise of greatness).

Marilyn Johnson traveled all the way from Topeka, KS and Heloise Lynn joined us from Colorado as our most-traveled participants. The weather held beautifully with cool temperatures and overcast skies to give the horses terrific P&Rs despite the rugged terrain and climbs. Judges Doanna Daniel and Dr. Val Bixler were wonderful with the competitors, building confidence in everyone.

MaryAshley had assembled a top-notch team, starting with her husband as Trailmaster and YMCA families playing many roles through-

out the weekend. April Baxter and Alanna Sommer kept folks fed, Amy Martin and Nancy Williams kept time, Alice Yovich interpreted rules, Teresa Musgrave and her P&R Crew braved the winds up on the mesa, Barbie Van Order and her tiny band rode Safety, Carolyn Alley and Erin Williams were the judges' secretaries, Tiffany Fryer drove everybody around, and Peter Yovich took pictures of it all.

It takes a brave woman to tackle a new home (MaryAshley and Richard were in the process of moving to the ranch that week!), new job responsibilities managing this YMCA location along with Camp Flaming Arrow equestrian programs, developing new trails and producing an NATRC clinic and ride for the first time. Well done, MaryAshley, ... well done!

More Membership Value with Enhanced Member Services

By Elaine Swiss

Your NATRC membership is now more valuable with the launch of our Enhanced Member Services. Beginning in May, all of the programs that your annual dues supported in the past will continue with more benefits added monthly.

NATRC annual dues have long provided membership to both the national and regional organizations, as well as provided for scorecards, rule books, award and recognition programs, record-keeping, newsletters, educational material, websites, reduced ride fees and ride management support. In addition, NATRC has offered the opportunity to purchase additional insurance coverage through its relationship with Equisure.

Now the NATRC annual dues will give access to a variety of discounts or free products through its new Member Services partners. Some of the partners will be familiar names as they are also National Sponsors of NATRC. Others will be new names.

The first organization to offer a discount to NATRC members through the Enhanced Member Services is Ride Alert. Ride Alert provides a subscription for emergency services on the trail or on the

road. A unique registration number on a bridle, helmet or trailer tag or on a wristband help first-responders identify you, your horse or your rig, providing critical information to get you the emergency assistance you need.

Trailwise Saddles is also offering a significant discount to NATRC members, plus a donation to NATRC for every saddle purchased. Trailwise Saddles is both a National Sponsor and a Member Services participant.

You can find more about the vendors in our Member Services program by visiting the NATRC website regularly and watching for NATRC E-News announcements as new vendors are added.

Code of Ethics

We, the NATRC National Board of Directors, Executive Director, judges, committee members, and employees are ambassadors of our sport whether at an organized event or informal gathering. There is an implied code of ethics to adhere to. This code of ethics dictates that we behave professionally, courteously and responsibly. This includes:

- Representing the sport in a professional manner
- Being respectful when giving an opinion
- Substantiating information before giving an opinion
- Being kind and courteous to others



The Tennessee Walking Horse
SMOOTH RIDIN' ALL TERRAIN VEHICLE
Visit www.twhbea.com to learn more!
(931) 359-1574

TWH BEA
TENNESSEE WALKING HORSE BREEDERS' & EXHIBITORS' ASSOCIATION™

The Tennessee Walking Horse
Breeders' & Exhibitors' Association
is pleased to offer a variety
of programs for Trail Riders.

©BILL ERICKSON

Question for a Trainer

By Janine Esler

Reprinted with permission from Extra,
the quarterly online newsletter of the
American Endurance Ride Conference,
866-271-2372, www.aerc.org

Question:

I have an Arabian mare who is well trained in the arena. I rode her out on the trail several times with a friend's experienced horse leading. My mare was pretty relaxed and didn't shy much at all. I have continued to ride her on the trail alone. She has begun to refuse, wheels and heads back home and is resistant to go forward. Every time I ride her she gets WORSE! I know she's faking it because she was so relaxed on her first ride. My friends tell me that if I were a stronger rider I could make her go down the trail, but I find that the more I try to insist the nastier she becomes. She has even begun rearing during refusals, balking at loading in the trailer and has become hard to catch in her pasture. She used to come right to me. Does she just not want to be a trail horse, or is there something I can do to make her like it?

Answer:

Yes. There is something you can do. All of the avoidance behavior you have experienced with your horse comes from fear. If repeated often enough it will become habit. If you continue to "insist" your horse go forward even when she's afraid, she will begin to expect punishment and develop avoidance behavior associated with the punishment rather than the obstacle on the trail you are trying to get her past.

For example, the water obstacle. When the horse hesitates when she sees water, the rider pushes her forward. When the horse won't go for-

ward she is punished. Quickly the horse will associate the sight of water with a spanking! Soon the battle to go through water is no longer about water but the horse trying to avoid the inevitable spanking she gets anytime water appears. A horse will develop some pretty extreme avoidance behavior such as running backwards, doing 180 degree spins or even bucking. She gets punished for that and the rider wonders why their horse hates water! Never punish a horse for refusing an obstacle! Always praise each small step your horse makes forward and give her the time it takes and it will take less time. Now your horse will associate the obstacle with praise and go forward rather than fear a spanking.

The longer this cycle of fear and punishment continues, the more violently the behavior will escalate and the longer it will take you or your trainer to correct it. What has happened is you have asked too much from your inexperienced horse too soon. She is not faking it; she does not understand that concept. She was reasonably relaxed and confident on her two initial trail rides because the lead horse was relaxed and confident. Your horse is a herd animal. If the "leader of the herd" says "everything's okay" your horse will follow. "Two trail rides does not a trail horse make". She obviously still needs the security of the calm lead horse. Continue in this manner until your horse is relaxed while following and in the lead. Then you can attempt riding solo.

At this juncture it is important that you have bonded with your horse and have the experience and calm composure to replace the lead horse with yourself. If you do not fit this description, send her to a trainer who does. Remember, patience and time have no limits when teaching your horse on the trail. Rushing and punishing only cause anxiety. Horses only learn when they are calm and relaxed.

It is also important to be able "lead" your horse and only proceed at an educational speed that she is comfortable with. A rule of thumb is that when your horse feels like she is regressing, you are pushing her too hard. Go back several steps and re-

peat, repeat, repeat to build back her confidence. Remember, it is our job to give the horse security, and make trail riding fun for her, not to be her disciplinarian and drive her forward out of fear of us. Think of progress in months and years not days and weeks. I have never met a horse in all of my training experience that didn't love being on the trail, eventually.

Janine Esler is a 40-year training veteran who owns Esler Arabians in Granite Bay California. Janine has an extensive show and endurance training background. She has 12,000 competitive miles that include eight Tevis Cup buckles including a 4th place finish in 2010 starting last out of 250 entries. Her near perfect completion record also includes over a dozen 250 mile completions and 100 mile top 10 awards including the National Championship. She can be reached by phone: 916-652-8937, email: esler.arabians@gmail.com, website: www.eslerarabians.net

Standing

S
E
R
Y
A

R
A
V
E
N

28.1% *Witez II



Proud sire of
Patti Hicks'
Half-Arabian
filly,
RPH Ebony
Diamond

Arabian
Stud
Service



chiggevillfarm.com

We're Itchin' for Your Business!



As a ride management team, you may be living in a “Field of Dreams” but, unlike Kevin Costner, the first cold hard truth is “Just because you hold it, they may not come.”

The second cold (brrrr...), hard truth is that it takes marketing to get a good turnout with new competitors. Start now for fall rides. Include a clinic with the ride or a clinic before the ride. Get those flyers out in every

paper and magazine. Talk at 4H, colleges with equine studies, and so on. Be creative.

Third, you have to toot your own horn. No one is going to know about your clinic and ride if you don’t make a lot of noise! Get on a local radio or TV show, or both, and talk about NATRC, competitive trail riding, and your clinic and ride. (Did you know that radio and TV are required to give air time to non-profits for

feed store, tack shop, farm co-op, fairgrounds, vet office, boarding stables and any other place you can think of for 100 mile radius around your ride location. Get your ride/clinic on every horse event calendar in every local

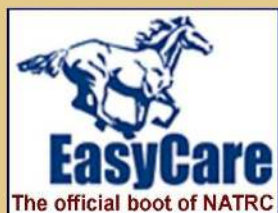
community interests? Don’t forget to mention that NATRC is non-profit when making your request.) Come up with something unique about your ride (maybe the clinic itself) and write an article for local papers and regional magazines. Take a cue from our President’s Message in this issue.

Fourth, your team has to think beyond current NATRC members. Get a list of former members and new people who have competed but not become members through your Regional BOD. Contact all those people personally and invite them to your ride. Offer a 1-day B ride for those whose horses are in less than tip top shape.

Finally, you have to work smarter. The team should sit down, brain storm, develop a marketing/advertising plan, and share the load to execute it.

SPONSORS

We appreciate and applaud our sponsors. Their support helps us succeed.
By purchasing products and services from these companies, you are supporting the sport you love!





to back, but not side to side; thus mounting from the side inevitably throws the horse off balance to some degree. This often makes the horse step one way or the other to compensate.

This EQUUS article reported that Joyce Harman, DVM, who practices equine acupuncture and chiropractic in addition to conventional veterinary medicine, did some studies using a "high-tech sensor pad connected to a computer." She found that mounting from the ground put the most pressure on the back. The use of a mounting block reduced the pressure somewhat. The least pressure on the back was seen with the leg-up method, that being where an assistant gives the rider a leg-up boost like jockeys use. Using a leg-up allows a rider to rise above the saddle and come straight down.

Interestingly, in the EQ Consultants column in the September 2006 issue of EQUUS magazine, p. 83, Tracy Turner, DVM, responded to a question about the use of mounting blocks by saying, "Unless you can step into the stirrup and pop into the saddle without putting stress on the stirrup – a feat equivalent to vaulting onto a bareback horse from a standstill – the process of mounting places torque on the withers and twists the spine, which is unpleasant at the time and can cause serious, permanent injury over the long run."

I'm a scientist, so I like documentation. If someone makes a statement, I like to hear something that backs it up. These references cite scientific data that make it clear to me that it's better for the horse if we use whatever advantage that we can to mount – a mounting block at home, a log, a rock, even a depression in the ground. The higher we can get before putting our foot into the stirrup, the less torque we'll put on the horse's back, and the better it will be for the horse. **I also agree with the words of Dr. Turner, "As a rider myself, I can identify with the pride you take in mounting from the ground...but this is one tradition that the horses would be better off without."**

In the 1995 article, Karen Smith said, "The way you get yourself from ground to saddle at the start of a ride has important implications for your horse's body and mind". That's an important thought.

To read the initial article, go to www.equisearch.com and search for "mounting."

The first thing you need to do to go on a ride is to get on the horse. There are many factors involved in accomplishing a nice, smooth, quiet, athletic mount. One of these factors is whether to mount from the ground or to use a mounting block.

EQUUS Magazine published an article titled "Easing Mounting Pressure" by Karen Smith in the August 1995 issue (pp. 48-55). The article started out reminding us of Newton's basic laws of motion and acceleration. "When a rider mounts a horse from the ground, he's accelerating upwards against gravity, and the entire body weight has to be lifted by energy. The heavier the person is or the greater the distance he is be-

low the horse's back, the more energy is required to lift him and the more effort the horse must invest to withstand it." The article then cited Jeff Thomason, Ph.D., Ontario Veterinary College, who estimated "that a person mounting a horse from the ground could actually exert up to double his own weight on the stirrup. The resulting force pushes down on the stirrup, pulling the saddle both down and toward the rider." This leads to torque, or twisting the horse's body rather than just pulling on it. As the saddle torques toward the rider, it presses against the spine, especially the withers, on the off side and digs into the muscles on the near side. Thomason further explained that a horse is fairly stable front



Preserving and promoting the horse of Native America, their hybrids and descendants.

*** * Since 1961 * ***

**Awards Programs
National Show
Quarterly News**



**AIHR
American Indian
Horse Registry**

www.indianhorse.com
aihrnanci@gmail.com

Membership Recruiters Report

By Jerry Sims

Let's welcome the following new members and rejoining members.

Region 1

Jordan Hunter, Laurel Emsley, Teena Padilla, Lisa Waseilewski, Molly Anderson

Region 1A

Matthew and Deanna Quinn, Katrina Carney

Region 2

Trisha Taniguchi, Suzanne Shawl, Sherry Carr, Linda Hateley

Region 3

Cathy Grimes, Rick Mellicker, Gillian Conley, Betty Garrett, Tia Harris, Tom King, Candice Lagasse, Ashley Moore, Dan Shoopman, Cindy Simmers, DaNae and Madison Kramer, Cathy Cumberworth, Brandy Ferganchick, Cecilia Hurlbut, Sharon Kettwich, Kimberly Kissman, Cynthia Ramsey, Holly Ulyate, Pete and Gwen Kasper, Debbie Pugliano, Louise Ehrich, Rebecca Noland, Julie Sanford, Suzannah Vowel

Region 4

Vicki Ives, Tomlyn Gray, Laura McNeel, Marti Benson, Kensee Davis, Janet Lolley, Taylor McNeel, Terri Deaton

Region 5

Wendy Allen, Steve Andrews, Juliana Horn, Pam Moore, Debra Ambrose, Thomas Mitchell, Alice Farrar, Gynnis Haley, Lee Myers, LeAnna Totten

Region 6

Cynthia Peticolas and Makayla Stranger, Sandra McNiff, Kristen Sequin, Shannon Ankersen, Laura Coon, Jennifer Akers, Olivia Lubbers, Jimmy Sylva

Please let me know if I misspelled your name or left you out;
(beth_sims@q.com).

We are making progress in our membership. Take the time to talk to our newest members about how they can recruit new members.

Many veteran competitors say, "Everyone I ride with already belongs to NATRC".

How many of us can say the same thing? How many of you have friends you haven't asked to join?

Thanks to all the new and veteran managers and all those who help make NATRC click.

Thanks to all of you who continue to manage clinics.

Thanks to all the region boards of directors, the national board of directors, and all the committee chairs who continue to better our sport.

Thank you to all our judges; we know you love NATRC.

Thank you to all of you who just keep on doing, because we would not exist without the volunteers.

Thank you to all the competitors, present and past.

If you are giving back, you are receiving so much more.

This year starts a new and exciting new beginning. The future is forthcoming and your thoughts and ideas will be needed to let your board of directors know what you expect the future of NATRC to be.

The National Board of Directors is listening and moving forward.

NATRC, "You're Gonna Learn Something."



Bring Your Best West

to the AHA
Distance Nationals



New for 2014— Open Pioneer Awards

For more information,
visit ArabianHorses.org
or call 303.696.4509
Teeter Ranch • Oreana, ID

SCHEDULE OF EVENTS:

September 25th & 26th

- National 70 Mile Competitive Trail Ride
- Open 70 Mile Competitive Trail Ride
- Open Limited Distance
- Open 50 Mile

September 27th

- National 50 Mile Endurance Ride
- Open Limited Distance
- Open 50 Mile

September 28th

- National 100 Mile Endurance Ride
- Open Limited Distance Ride
- Open 50 Mile
- Open 100 Mile



By Elaine Swiss, NATRC Treasurer

Investments come in all forms. While most of us are familiar with financial instruments such as stocks, bonds, CDs and bank accounts, these investment types address only part of the total investment equation. Investment also comes in the form of intellectual capital, time and risk.

The NATRC National Board of Directors is responsible for the financial investments of the organization, including our stocks, bonds, annuities and bank accounts, but the Board also has the responsibility to generate ideas, dedicate hundreds of hours of effort each year, and make spending decisions that may or may not achieve the desired results.

The Balance Sheet for NATRC displays the details of its financial investments. The report on the balances of each of its accounts reveal that NATRC

is in sound financial condition with \$341,370 in total assets at the end of April, 2014. The operating funds that are needed on a monthly basis for expenses are invested in checking accounts and savings accounts that are very conservative as these accounts are insured and have no risk of losses. The Scholarship and Loan accounts are invested similarly.

The Foundation accounts are split between an annuity insurance product that pays a set amount of interest each year that has no risk of loss to the initial investment, and a stock and bond mutual fund that has returned 10 times more than the annuity each year since 2011, but has a risk of losses.

With bank accounts as full as these, and operations positioned correctly to breakeven each year, the Board turns its attention to generating

and soliciting ideas to improve all aspects of NATRC, including trails, education, safety, and administration. These categories capture everything from ride locations, judging and management practices, awards, bookkeeping, marketing and membership.

Once ideas are recorded, discussed and distributed to the membership, those that are deemed worthy to pursue must be implemented. There are generally two choices: leverage volunteer labor or hire.

NATRC has been successful for more than 50 years due to the dedication of its volunteers, and will continue to be successful into the future. The Board must continue to cultivate members who have the skills needed to implement the ideas and insure that members are recognized for their commitment and sacrifices. Of course, it may also be necessary to contract help when the skills are not available or the project is so important that a financial investment is appropriate.

Finally, there are no guarantees with any decisions that the Board and members make. Even with perfect execution, an idea may not yield the expected outcome. Time and money invested in a project cannot remove all of the risk of failure. It is the Board's role to minimize the risk by choosing the right direction as best it can. You can help the Board with this role as your own investment in NATRC's future.

Texas Hay Net

Will Make Your Hay Last Twice As Long



Slows Eating • Reduces Stress • Mimics Natural Grazing for Improved Digestion • Calms Aggressive Behavior • Excellent for Insulin Resistant Horses



Fits Round Bales up to 6'

www.texashaynet.com

325-388-2727

or 325-247-6423



Did You Know.....

.....there are 28 horses named "Jake" in the NATRC data base? Some of those could be duplicates, but with different riders, it's hard to tell. Be sure when you enter a ride that you use your horse's full, correct, hopefully unique name every time so the earned points and mileage will be accurately credited. If the owner is different than the rider, the rider should NOT indicate they are the owner; maintain the distinction to avoid errors in the national data system. If you sell your horse or someone else rides him, be sure his exact same name is used.

From Cheri Jeffcoat, Chair,
Points and Data

NATRC
R2-DTOUR
EPISODE MMXIV

In a region far, far away... known as Region 2 an invasion has started. Three courageous riders have been sent on a quest. Super Nova Karen, the driving force of the team, trying to ride her mount Smokey of the whirling dervish band, Lady Lory riding her million dollar Mikie (whom she has only gotten a hundred bucks out of so far), and fair haired Caden the Dragon Rider, on her dragonette Chloe. Their quest is to ride the regions. May the Horse be with Them.

NATRC
R2-DTOUR
EPISODE MMXIV

RIDE THE REGIONS
SPONSORED BY NATRC

REGION II	Vail Lake (CA)	April 4-6
REGION IV	Pole Canyon (TX)	April 11-13
REGION FUN	Land Between Lakes (KY)	April 15-18
REGION FUN	Mammoth Caves (KY)	April 19-20
REGION FUN	Daniel Boone Park (KY)	April 21-23
REGION V	Uwharrie (NC)	April 25-27
REGION IV	Without A Trace (TX)	May 2-4
REGION III	Navajo Lake (NM)	May 9-11
REGION VI	EKAHA Hill & Dale (KS)	May 16-18
REGION I	Jackson Forest (CA)	August 16-17

R2-DTOUR 2014

Once Uh Pony Time

By Karen Kafka, R2

Karen Kafka and Lory Walls, of Region 2, set out on their quest April 5 to do a ride in every region and all of Region 2's rides. They plan to conquer Region 1 later this summer.

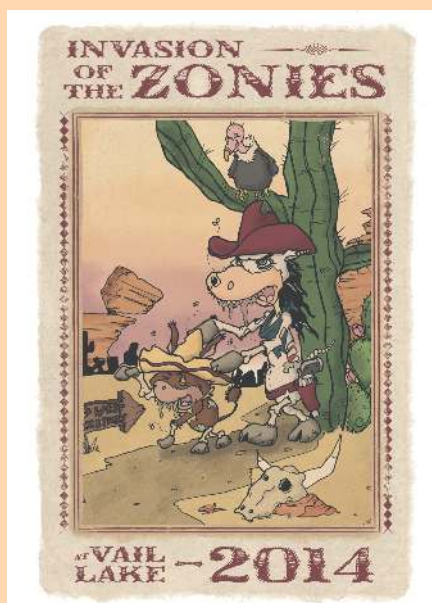
Once uh pony time, in a land far away, known as Region 2, there lived a beautiful Princess Mary Jo* (all Ride Managers in the Region are royalty). She was kind and considerate and wanted to host another Vail Lake Ride for all the people in the land. At a conclave of the people in February, the greedy and needy Super Nova Karen roared her terrible roar and stomped her terrible one good foot, demanding that the kind Princess Mary Jo extend the ride in to a 2 day ride. But it wasn't until the great and wise seer Beni enticed Princess Mary Jo with the thought of the many entries that could fit in to Super Nova Karen's trailer that Princess Mary Jo made the ride a 2 day ride.

On a beautiful day in the land of sun (Zonie), Super Nova Karen sought out the Oracle RMS and discovered that many of her neighbors would be invading Vail Lake. It was then that the frightening plan of the Invasion of the Zonies was hatched. Super Nova Karen proclaimed she was unofficially changing the ride name to "The Invasion of the Zonies" she cajoled the great Wizard Boyd (father of Caden, the dragon rider) to conjure up an awe inspiring t-shirt logo to strike fear in to the hearts

of the people in the land of fruits and nuts. Queen Bee Kandace solicited the help of her creative daughter Princess Chase to design the wardrobes of other riders of the realm. Miss Green Cathy, and Sherrie the Bold had also joined the Force. Not to be forgotten in this heroic tale were the sister sirens Elizabeth and Brianna.

To be continued . . .

*Cast in order of appearance:
Mary Jo Malone,
 R2, Ride Chair Vail Lake Ride
Karen Kafka,
 R2, Ride Chair STAR Ride
Beni DeMattei,
 Ride Secretary for AZ Triple Crown Rides
Boyd Williams,
 Caden's dad
Caden Williams,
 Junior Rider who regularly rides with Karen
Kandace French,
 Ride Chair Bumble Bee Ride
Chase,
 Kandace's daughter
Cathy Peterson, aka Miss Green,
 Ride Chair McDowell Mtn/ M&M Ride;
 Triple Crown conspirator
Sherrie Bray,
 frequent R2 rider
Elizabeth Floyd,
 Junior rider
Brianna Floyd,
 Junior rider



**"MORE for your competition dollars!
 More miles, time with your horse, fun, learning opportunities, and camaraderie."**



Benefit Ride Results in Generous Donation to Wild Mustang Program

By Kris Hapgood, Ride Chair

Region 4 "OK Run for the Mustangs" benefit ride recently raised \$933 for the Wild Mustang Training Program operated at the Hutchinson, Kansas Correctional Facility.

This program was founded in 2001 to offer gentled wild horses for adoption that have been saddle-trained by inmates in a rehabilitation program there. In addition to a second chance for these horses, and a unique opportunity for the adopting public, the training program at Hutchinson also provides inmates with a meaningful work experience that contributes in a positive way to the community.

As inmates progress through the program, they move from providing basic care for the horses (feeding, watering, cleaning), to actually training them under the supervision and guidance of a professional trainer and correctional staff.

The benefit ride took place April 25-27 at Lake Carl Blackwell near Stillwater, OK. The ride attracted 47 riders and judges from

10 states and four different NATRC regions, with 24 "out of region" riders

participating. There were a total of 26 Open Division riders at the "Run for the Mustangs!"

Proceeds for the Wild Mustang

Program donation came from ride entry fees, a benefit dinner, generous donations, a dollhouse raffle, and even a judge's fee was waived as an additional contribution to this outstanding program.

Program Manager Dexter Hedrick and his lead assistant Dion Pope were extremely grateful for the contribution. Hedrick said, "This is the largest single donation we have ever received, and every dollar of it will be used to purchase much-needed equipment, tack and supplies for our program."

Hedrick added, "Thanks to each of you for your participation in the ride, and for your generosity. It means so much to us. We are truly touched by what you have done."



*There were lots of out-of-region riders!
Photo by Mike Collins, Optical Harmonics, used with permission*



*Open Sweepstakes winner
Raven Wood Royal Flag,
ridden by Jonni Jewell
Photo by Mike Collins, Optical Harmonics,
used with permission*

4-H Junior Rider Year End High Point Award

To encourage participation by 4-H members, NATRC offers a 4-H Junior Rider Year End High Point Award.

- The award goes to the high point rider and high point horse **regardless** of the rider's division.
- The award is a self-nominating award. The nomination must occur before the end of the ride year, which is the second Sunday in November. This year, it will be November 9, 2014.
- The rider must (1) be a member of NATRC (2) send Laurie DiNatale an email (natrc@natrc.org) stating that they are a 4-H member and (3) have their 4-H leader verify that they are a member with an email to Laurie DiNatale (natrc@natrc.org).

In a number of states (Colorado is one example), 4-H now recognizes competitive trail riding as an activity that qualifies as a 4-H member's project.

Questions?

Contact Angie Meroshnekoff, awhitedog@aol.com.

Chair, Riders and Juniors Committee



Trail Marker

By Erin Glassman,
National Trails
Advocacy Chair

Staying on the Topside...

Something struck me this last month as I caught some of the television news while on a lunch break; I suddenly remembered why I quit watching so many of the news stations. Now, mind you, this is not a rant against CNN or Fox News channel or any of the like, and this is not a political gripe session, but rather this is my view point on keeping a positive outlook. It is interesting how much my mood improved when I had quit listening to political tirades. I have also made an effort to quit listening to gossip at work.

Since I have started making that effort, I have not only been a lot less stressed, but more cheerful in general.

For the bad things that do happen at my work, I try to turn them into a positive spin, such as, "Hey, I could write a book on this place and make millions of dollars!" Ok, that might be a bit of a stretch, but you get the idea. Likewise, we have a much more positive ride when we do stay on the topside versus having a view from the ground!

Keeping things on the positive side cannot only help improve our daily lives but can also help improve our relationships with others, whether that be with a spouse, a partner, other trail users or perhaps a land management agency (You knew I was going to throw in that phrase somewhere, right?!). It seems like a lot of us immediately take the defensive when people say things to us. One glowing example is how conversations on Facebook or email lists can rapidly deteriorate to character bashing and name calling. What if we all made an effort to try to keep things civil and be polite to one another? Maybe, if we listened to one another's ideas with an open mind instead of interpreting a different opinion as an attack, we could sort out some potentially great ideas.

Maybe we could all stop for a minute and consider what another person

is or has been going through (illness, fatigue, stress, etc?), and that they might not mean to come across in a negative tone. By trying to filter out the emotion and get to the meat of what they are saying, we might find a better way to solve an issue. Maybe we could also stop before we speak and work to frame things in a more positive manner. An example of this might be how to approach the park ranger about an area of the park that is in need of repair. A negative approach would be, "As I was riding, I found that the trail between mile marker 9 and 10 is really broken down and you need to fix it!" A positive approach would be "As I was riding today, I noticed that some trail repair is needed between mile marker 9 and 10. Is there some way that I can help you fix it?" Even if the ranger doesn't need your help, the tone you presented changed from "you screwed up" to "there is an issue out there, can I help fix it?"

All in all, I think spending time to think before we speak or act and trying to filter what we take in or put out to others could help us all not be so divisive and help us all to achieve greater success both socially and in our projects. Perhaps we could salvage what trails we might potentially lose and build better relationships with other users and managers! The sky is the limit here, folks!!

Before I end this Trail Marker, I would like to again call out to our membership for examples of trail work and projects that you have been working on so that we can share them with the organization. These do not have to be strictly NATRC projects; they could be about NATRC members working with other groups such as Back Country Horsemen of America, Friends groups for different parks, or individuals just pruning as they ride. You do not have to write these in a story form, but do send me the details—where, who, what, how many hours, when and why—and I will take care of the rest! Pictures would be an excellent optional addition to your contributions. Please email them to me at ejacob716@gmail.com. Please also indicate that the email is regarding trail work so my spam filter doesn't engage :) Thanks in advance for your contributions!

Advantage Saddles take the mystery out of saddle fitting!



- > Your horse will move out like never before
- > Handcrafted, attention to detail, top quality leather
- > Lightweight, short bars
- > Open channel down spine
- > Rigging self-adjusts
- > Custom Artwork
- > New PERF-EQ FIT PAD
- > Custom Mohair Cinches

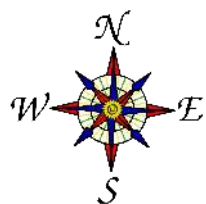


(877) 979-5979

www.AdvantageSaddles.com

Made in the USA





We Can All Make Good Maps

Bill Wingle (wwingle@uncert.com), Region 3

I've been making a number of the ride maps in NATRC Region 3 for several years now, and my wife and I are managing our third ride this year. We've found that good maps with accurate distances and good timing make for happy competitors. I've also put on a couple GPS clinics aimed at how NATRC riders can use a GPS on the trail. This has lead to a number of questions about "what GPS I recommend," and "how can I make a better map for my ride?" I will try to address some these questions here.

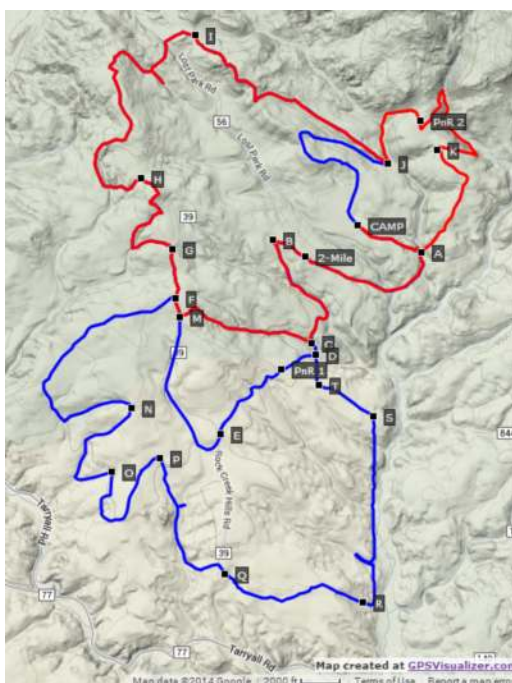
I personally use a combination of free, inexpensive, and professional (expensive) mapping software. The professional software helps me make the maps prettier, but it is not required to make a good map. There are any number of good free and inexpensive tools available that anyone can use and get good results.

To have a good map, it really helps to have an accurate trail. With the various GPS tools available today, getting a good track of the trail fairly easy. I like the Garmin eTrex Legend/Vista/20/30 models. They are accurate enough, durable, and the batteries will last for several days of riding. I always like to carry two GPS's though. Batteries die. GPS's can get a little goofy sometimes. Carrying two has saved me from having to reride trails. Regardless of what GPS you use, make sure you set it to capture the most sample points possible. The

difference between the default setting and the finest setting on twisty trails can be 10% to 20%. Using the default settings causes the trail come up short on mileage. If your GPS track reported 20

miles on the default setting, the real trail distance could easily be 22 to 24 miles.

For editing and creating GPS files (*.gpx), I like a program called



[TopoFusion](#). It is pretty easy to use and not too expensive (\$40 basic; \$69 pro). It supports a number of background maps: topographic, aerial, satellite.... I use the satellite imagery extensively to fill in gaps where trails are missed or changes are needed in the trail at the last minute (I can download the imagery onto my laptop and have it all at the ride). With a lot of the satellite imagery out now, even single

track trails can be picked out if there's not too much tree cover. My favorite feature of this program is that it will let you import (or manually create) multiple, overlapping GPS files, average them together and create a network of trail segments. You can then link the segments together in any order that you want, and it will output a new GPS file (*.gpx) or Google Earth file (*.kml, *.kmz) with accurate distances. You can also use this software to make waypoints.

Printing and layout is a bigger problem. TopoFusion's printing leaves much to be desired. For my work, I use professional mapping software (ESRI ArcMap). It is expensive and not easy to use. It makes great maps though and I use it for our region's maps.

For personal maps, years ago, I used Topo! (sold by National Geographic). It prints very nice maps, but at the time editing trails or importing trails was tricky. I would edit GPS tracks in Garmin's MapSource program (BaseCamp is their new free software), load the edited track back onto the GPS, then download it into Topo! I suspect they've made it easier by now. The last I saw, this software was selling for \$50 per state.

There are some websites that use Google terrain, USGS topographic, or satellite imagery for base maps that will let you upload GPS (*.gpx) files and Google Earth files (*.kml, *.kmz). An interesting free site I've looked at is [GPSVisualizer](#). It will let you map trails and waypoints. If you import Google Earth files (*.kml or *.kmz) you can specify the trail line color and weight (using Google Earth). This is nice for showing Novice/CP and Open tracks on the same map. If you use a *.gpx waypoint file, you can post labeled points. The map shown here is a basic map created using TopoFusion, Google Earth and GPSVisualizer.

The actual map we used for this ride can be downloaded from [Nearby Trails](#).

Labeling can also be handled afterwards though with various image editors if you get the map into a JPEG or PNG format. I like [Hypersnap](#), but there are many good programs of this type.

(Continued on [page 17](#))

Waypoint	Total Distance	Type	Water		Distance	Interval	Time	Interval	mph	
Camp	0.00			Create Table	Camp	0.00	0.00	0:00	0:00	
A	2.98				A	2.98	2.98	0:54	0:54	3.3
B	7.03				B	7.03	4.05	2:02	1:08	3.6
C/P&R 1	9.36	PR			C/P&R 1	9.36	2.33	2:42	0:40	3.5
D	12.41				D	12.41	3.05	3:49	0:52	3.5
F/P&R 2	13.57	PR			F/P&R 2	13.57	1.16	4:09	0:20	3.5
2 Mile	13.64							4:24	0:15	
Camp	15.64				2 Mile	13.64	0.07	4:25	0:01	3.5
					Camp	15.64	2.00	4:59	0:34	3.5
					From:	4:44	to	5:14	3.48	Avg.

Looking For A Judge?

Veterinary and Horsemanship Judges:

Has your address or
phone number changed?
Please notify the
NATRC office of any changes.
Indicate home and
office numbers. Thank You.

Ride Managers:

Secure your judges early.
Remember, you must contact and secure
your judges well in advance of your ride date!
Please contact the National Office
for a current Judges List.
If you have difficulty securing
an NATRC judge,
please contact the appropriate
Judges Committee chair:

Patsy Conner - Horsemanship Judge Co-Chair
H: 501.663.1477 Cell: 281.381.8189 Fax: 501.663.6781
connerpatsy@yahoo.com

Mike Bridges, DVM -Veterinary Judge Co-Chair
H: 704/937-3300
mwbdevm@earthlink.net

All Members:

The following are applicants, apprentices or provisional judges.
Members may submit comments to the Judges Committee
about the following people:

Provisionals:

Veterinary Judges
Valerie Bixler, DVM (R4)
Natalie Morris, DVM (R5)
Mike Coker, DVM (R5)

Horsemanship Judges
Sarah Rinne (R6)

Apprentices:

Veterinary Judges
Sharon Dehart, DVM (R4)

Horsemanship Judges
Patti Hicks (R4)
Wayne Tolbert (R5)

**Remember, apprenticing must be done
with an approved judge who has agreed to
judge and supervise an apprentice.**

RIDE MANAGEMENT SUPPORT FUND

FINANCIAL HELP!

For new ride
managers or
managers of rides
in new locations.

Apply for a grant of
up to \$1000 to help
defray the costs of
your NATRC
sanctioned
Competitive Trail
Ride.

ONLY TWO REQUIREMENTS!

1. Managers must be NATRC members.
2. The single-page grant application (with supporting documents) must be submitted at least 90 days prior to the ride.

For an application,
please contact our
[National Office](#).

NATRC

(Continued from page 15)

For timing tables (see example), I have a Microsoft Excel macro spreadsheet where I list the timing points, the distance to the point, and the point type (Lunch, P&R, water, timing point), and it creates a table with all the timing figured out. I can then edit the speed on each section, and it will automatically recalculate all the times. This has saved me lots of time and prevented a lot of errors. Let me know if you would like this file. I will send it to you individually.

Things I think make a good map:

- Map basics. A north arrow and a scale are always nice.

- Large text. Many eyes could be sharper. Mine are getting old.

- Trails made using GPS tracks. Accurate distances and locations enhance rider confidence.

- If Open and Novice need different maps, mark both trails on each map. If there are different trails being ridden on different days indicate those too (with a different color or line type). When people make a wrong turn, seeing all the trails can really help.

- Roads marked on the map (with #'s). This information is often good for the drivers moving volunteers and judges around. If a rider has to pull, roads can be shortcuts to camp or a place to get picked up. Emergency services may also need directions to find you.

- Timing points no more than 4 to 5 miles apart. This makes staying on pace easier.

- If possible, I like P&R's to be marked on the map and to be timing points. This takes the guess work out for the riders.

- In the timing tables, I have columns for the Waypoint name, total distance, interval distance, total time, interval time, and target mph. For lunch and P&R's, I explicitly define the arrival and departure times.

- Color. It is easier to read. I think I usually spend \$60-\$80 to print 200 color maps (2-days, 60 riders, volunteers, and judges).

- Latitude / Longitude coordinates on the edge are nice for people with GPS's. Be clear if you are using decimal degrees or degrees, minutes, seconds.

- Topographic map backgrounds (1:24000 USGS detail level maps).

- Try not to let the map get too busy (something I fight with).

I think a good map removes a lot of uncertainty for ride competitors and ultimately makes the rides more enjoyable.

New Benefit for Members!

INTRODUCING MEMBER SERVICES PROGRAM



Significant discounts on merchandise



Significant discounts on services



Equine industry vendors



Find at www.natrc.org/mbrservices.html



NORTH AMERICAN TRAIL RIDE CONFERENCE



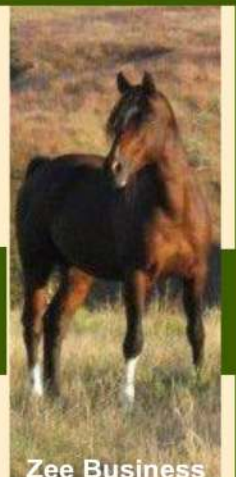
PrairieSylvania Arabians

Sustaining the traditions of Rushcreek Arabians

- ♦ Working Athletes
- ♦ Endurance & Competitive Trail
- ♦ Ranch Work & Pleasure Trail
- ♦ Stamina, Soundness & Good Sense
- ♦ Two Superior Stallions at Stud

Sales-Breeding-Clinics

SPECIAL! Summer discounts on yearlings and 2-year-olds.



Priscilla Lindsey
Breeding Farm
Concordia, KS
785-259-1687

Erin Glassman
Training Farm
Hutchinson, KS
620-617-7221

Zee Business

psarabians.com Facebook/PrairieSylvania Arabians

National Board of Directors Meeting Summary, Oklahoma City, OK,

February 20, 2014

CALL TO ORDER by Kim Cowart, 8:37 a.m., February 20, 2014. Pimentel, Meroshnekoff, Malone, DeMattei, Sims, Roper, Green for Swiss, Gould, Cowart, Clayton, Rinne, and Lindsey present. Roper is now the R3 Director, with Peters resigning. Laurie DiNatale, Executive Administrator. Patsy Conner present as Judges Committee Co-Chair and Sanction Chair. Laurie Knuutila as NATRC Hoof Print Editor. Bev Roberts as Marketing Chair and Webmaster. Guests: Bob and Margie Insko, Gene Boicelli, Marty Findley and Julie Hall.

MINUTES. November 9, 2013. Call for corrections. **Meroshnekoff moved to accept minutes, Green seconded. Motion approved.**

PRESIDENT'S REPORT. Cowart. Majority of riders want a competition that tests both them and their horses. We need to remember that there is more than one path to success in NATRC. Novice and CP Divisions represent 75% of our competitors. It may be time to recognize those riders more. Renewing the Strategic Plan will help us to focus our efforts.

EXECUTIVE ADMINISTRATOR'S REPORT. DiNatale reported that the renewal process continues. At the November meeting, our Measurements suggested that, because of reduced member and rider numbers, our organization no longer warrants a full-time EA. DiNatale was asked to bring a proposal to the Executive Committee for a reduction in her hours starting in 2014. DiNatale submitted the proposal of 25 hours per week to the Executive Committee, and it was approved. Hours will be flexible with the understanding that many times of the year are busier than others. Cowart reminded the BOD that this is an experiment. DiNatale is willing to try to make the hours work out over the year, to 25 hours per week. She will report in July on the status of the project.

SECRETARY/TREASURER'S REPORT. Swiss sent a report. Cowart reviewed the reports.

BY-LAWS & RULES. Sarah Rinne (Wayne Hyatt). See Rules Report in Hoof Print or on website.

POLICIES AND PROCEDURES. Green/Dieterich. Consensus to approve:

P. 4 Cash awards. In working on breed awards for 2013, the question of cash awards came up. We all agreed that we thought it was an NATRC policy to not allow cash awards, but it didn't seem to be documented anywhere. A simple statement to that effect should suffice.

P. 4. Clinic reimbursement. The amount available to reimburse clinics for insurance has varied. Rather than specifying here, we can instead say the amount is determined annually by the NBOD, and that amount will be found on the Clinic Sanction Application and Post-Clinic Report and Request for Reimbursement.

MANAGEMENT. Jean Green. Work on Management Manual continues. Should be ready to print by the end of March. Manual will be sent to Ride managers who request one. Green will send tips on using the RMS to Ride Secretaries.

PROTEST. Clayton. No current Protests. We did have a drug violation which was reviewed by the Protest Committee.

PLANNED GIVING. Kelly Polden is working on materials.

RIDE SANCTION. Patsy Conner distributed and reviewed report. Sixty-one rides for 2014. Conner asked for any updates on rides or changes to be sent to her or DiNatale.

CLINIC SANCTION. Linda Clayton. Report filed. Five clinics on schedule so far with one insurance reimbursement.

RULES INTERPRETER. DeMattei. One delinquent report received.

INSURANCE. DiNatale. No changes to insurance. Clarification from Equisure that a day of insurance is from



(Continued on [page 19](#))

(Continued from [page 18](#))

12:00 a.m. to 11:59 p.m.

SAFETY. Gould. Would like clarification on the Safety Chair's role at rides. Roper stated that she requires that safety riders be CPR trained and Safety horses must go through P&R's. Conner felt that Safety riders should not be ponying an extra horse unless this is a function of rescue. We do have Safety Guidelines, which Gould will work on. It was brought up that we may want to add lines to our waiver to list medical training, willingness to render aid and medical qualifications. Consensus that while that may be helpful information for ride managers to have, it is not appropriate for the waivers. Roper suggested using local search and rescue groups for the rides. Those groups welcome the experience.

MARKETING/ PUBLICITY. Bev Roberts/Cris Ballard. Roberts is looking at how to best use the advertising budget of \$25,000. Survey answers have not changed since 90's. We have young people in the sport as we did then. But our population has also aged. We need to target all ages. Cowart gave some results of the survey.

SOCIAL MEDIA. Rinne. Facebook page is growing and very popular. We have 751 members and hoping to hit 1000 by 2015.

NATIONAL AWARDS PRESENTATION. Region 4 will handle awards presentation at the convention as hosting region.

BUSINESS MODELS AND MEASUREMENTS. Swiss. No report. Final measurements for 2013 sent at the end of November 2013.

SPONSORSHIPS. Swiss. No report.

RAFFLE. The winning tickets for Ranch Raffle will be drawn at the awards banquet. Next raffle will be a saddle donated by Trailwise Saddles.

MEDIA ADVISORY. Dieterich sent report. Dieterich coordinates the

content for Hoof Print. Dieterich, Bev Roberts and Mary Ashley McGibbon edit submissions. Swiss solicits and manages sponsorships. Roberts manages and designs, if necessary, the ads. Knuutila reported on Hoof Print. DiNatale reported that print subscriptions are growing. Green sends the Enews.

RIDERS AND JUNIORS. Meroshnekoff. She is working on establishing Junior Rider Liaisons in each region. R1 will have a program where Juniors will give a presentation on various subjects at one or two rides.

FOUNDATION. Swiss-Annual meeting will be held in July.

DRUG TESTING. Jerry Weil, DVM. We have \$4800 budgeted for drug testing.

VETERINARY DRUG COMMITTEE. Michael Peralez, DVM will continue to chair the committee.

TRAIL ADVOCACY. Erin Glassman. Report filed.

EDUCATION. Dieterich filed report. Dieterich worked with Conner and Christy Landwehr of CHA, to create the presentation for the upcoming Judges Seminar. Educational articles are gathered for Hoof Print.

Work continues on the revision of the Riders and Management Manuals. Dieterich coordinates efforts with Conner and Cowart to produce the Judges Forum. Dieterich sent the BOD a supplement to the Education report on Cold Therapy. To read more on the research on cold therapy by Dr. Janet Patterson-Kane, go to: www.sciencedirect.com.

Shared BOD amount \$388.49.

MEMBERSHIP. Jerry Sims. 353 non-members rode in 2013. Sims feels that we need a database of non-members so each region can contact and follow up encouraging them to join NATRC. Colleen Wills will pull those names, addresses, phone and email from each ride and send to Region reps. We have had 47 new members since October 2013. Clinics, B rides and fliers are important recruiting resources.

JUDGES. M. Bridges/P. Conner. Conner-Judges Committee needs to be approved. Recommendations are that JC would remain the same, but Kim Weil has asked to be replaced as a ride representative, and Mike Peralez has asked to be replaced as Vet Co-chair. Martha Findley would take Kim Weil's place, and Mike Bridges DVM
(Continued on [page 20](#))

Thoroughbreds Can Make Great Trail Partners

Bred to be an athlete, the Thoroughbred is most often considered the preferred breed in fox hunting and cross country. Trail is a perfect activity that embraces, and rewards, Thoroughbred strengths.

Become Recognized Nationally with Your Thoroughbred

NATRC offers breed awards. And North American Thoroughbred Society offers its members trail recognition in two separate programs. Details can be found at www.hellohorse.com. Visit us on www.facebook.com/NorthAmericanThoroughbredSociety

North
American
Thoroughbred
Society

(Continued from page 19)

would take Mike Peralez's place. Committee would be: Vet: Carter Hounsel R3, Donna Johnson R3, Mike Bridges R5. Horsemanship: Nancy Kasovich R1, Kathy Shanor R4, Patsy Conner R4, Priscilla Lindsey R6. Rider Representatives: Angie Meroshnekoff R1, Louise Vasquez R3, Jonni Jewell R4, Marty Findley R5. **Motion by Green, seconded by Clayton, to approve the Judges Committee. Motion approved.** Mike Coker, DVM, will be reinstated as a Provisional.

Conner reviewed Apprentice and Provisional Horsemanship judges. Discussion on mentoring program and its benefits. Conner would like to see an expedited process when complaints are lodged against judges. If a complaint is lodged against a judge, the Judges Committee could ask the Ride Personnel for input regarding the judge from the most recent rides that judge has judged. That input could be used in an investigation to see if complaints are valid. Jill Talbot is applying to become a Horsemanship Judge. Discussion on consistency in judging.

HALL OF FAME. Jackie Coleman. No report.

STUDENT LOAN/SCHOLARSHIPS.

DeMattei stated that there is an applicant for the Bev Tibbitts Scholarship - Taylor McNeel of R4. Application is exemplary. **Motion by Green, seconded by Clayton, to approve a scholarship of \$2,000 for Taylor McNeel. Motion approved. DeMattei will notify McNeel.**

A.H.A. Bob Insko. Discrepancy on requirement of 25 mile per day minimum for consideration for AHA Horse of the Year Criteria, against our 24 mile maximum for CP rides. Insko is willing to pursue the change to 24 miles for AHA criteria. Insko reminded BOD to spread the word on dual sanctioning with AHA. It's easy and may result in increased entries for rides.

BREED LIAISON. Lindsey stated that she will be contacting breed associations that we have reciprocal ad agreements with, asking them to renew.

HONORARY & APPRECIATION.

Ruth Mesimer. No report. Certificates prepared by Mesimer and ready for awards.

ANNUAL POINTS/NATRC DATA/NATIONAL RECOGNITION. Gloria

Becker/Cheri Jeffcoat/Laurie DiNatale. No report.

ELECTRONIC MEETING COORDINATOR. Sallie Kudra. Conference calls seem to work well. Please contact Kudra to set up calls.

CONVENTION 2014. Region 4. No report.

CONVENTION 2015. Region 6. Possibly Kansas City, MO or St. Louis. Third weekend of February 2015.

Regional Reports were skipped due to time constraints. Regions 2 and 6 submitted. All other regions can email reports to the BOD.

Old Business:

1. Electronic Scorecards. Cowart and Conner will test in 2014.
2. President's Cup award package. Specialized Saddle will supply at reduced cost for the next 5 years.
3. Riders Manual revision. In process.
4. RMSF. Cowart-criteria will be expanded, with report in July.

New Business:

1. Strategic planning. Plan needs to be renewed for next five years. Plan was reviewed. Primary desire of riders is the desire to have their horses cared for and monitored. We need to decide where our sport is going. We need to define who our customers are. We need to help our members develop the horse they have. Work on Strategic Plan will continue at the July meeting.

2. Martha Findley felt that Vet Judges should receive a wall plaque or sticker for their truck.

Motion by Clayton, seconded by Pimentel, to adjourn. Motion approved.

Full Minutes on file at National Office.

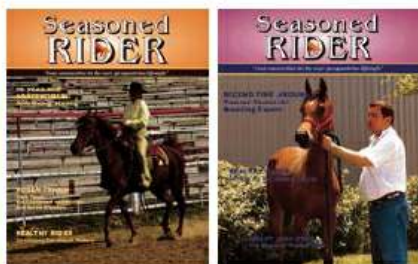
Next meeting to be held July 12, 2014, DoubleTree by Hilton Hotel Denver, 3203 Quebec Street, Denver, CO 80207.

Over 40 - Still Going Strong?



Seasoned Rider Online Magazine celebrates your lifestyle and brings together the community of 40+ horsemen/women.

There's something for every horse owner over 40 in this magazine!



Check out our website to:

- See the Latest News
- See Eye Report Videos
- Subscribe
- Join the Community

Find us on:

facebook

Scan to visit website:



www.seasonedrider.com

Missouri Fox Trotters Love NATRC!

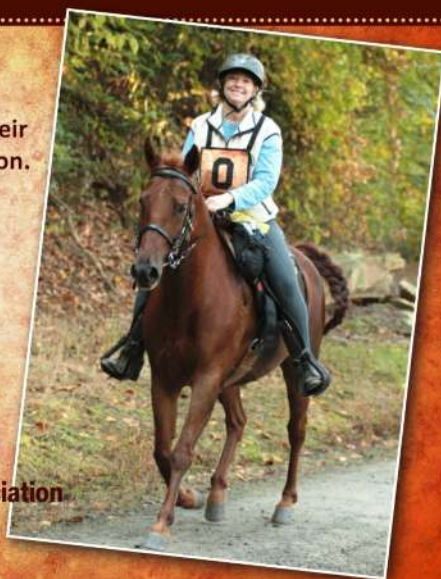
Missouri Fox Trotting Horse Breed Association recognizes and honors the accomplishments of our members and their Missouri Fox Trotters in NATRC Competition.



Missouri Fox Trotting Horse Breed Association

417-683-2468

MFTHBA.com



NATRC Student Loan Program

Student loans are available up to \$5,000 per person /year, at the discretion of the NATRC National Board of Directors, after proper application has been submitted.

Preference will be given to a full-time student who has been a member of NATRC or whose family has been an active member for at least three years. Consideration will also be given to a student or a student's family who has been an active member of NATRC for less than three years but more than six months.

A loan will be made based upon financial need, scholastic achievement, and character of the applicant as determined by the Student Loan/Scholarship Committee.

A loan is to be repaid in monthly installments with an annual interest rate of 3% charged on that loan, beginning not later than six months following graduation or when the recipient ceases to be a full-time student.

For an *application*, contact the NATRC Executive Administrator at natrc@natrc.org, or download [NATRC Student Loan Application](#).

Please complete the form in Word or as an interactive PDF and submit via email to the NATRC Executive Administrator at natrc@natrc.org.

North American Trail Ride Conference Mission Statement

The North American Trail Ride Conference (NATRC) promotes horsemanship and horse care as they apply to the sport of distance riding by offering a variety of challenging and educational experiences designed to strengthen horse and rider partnerships.

RIDE A REGISTERED APPALOOSA

Willing Attitude, Athletic Ability and as Unique as You Are.

From endurance to competitive trail riding, the ApHC Distance Program has something for everyone.

If you enjoy the growing sports of endurance and competitive trail riding, the ApHC Distance Program provides recognition for your hard work and training. Medallions, Registers of Merit, High Mileage awards and 1,000-mile awards await those Appaloosas completing the mileage requirements in these disciplines. Mileage completed determines the awards.



Photo courtesy of Lisa Delp & Meghan Delp

Call the Appaloosa Horse Club at 208-882-5578 or visit us online at www.appaloosa.com for more information on our Trail, Endurance & Distance Riding Programs.





TRAILWISE SADDLES

Versatile Fit That's Built to Last

"The saddle worked great! We had even sweat spots..... it was awesome! Very comfortable, really a nice saddle and fit me and my horse to a T."

*--Jim Ward
Region 3
Navajo Lake CTR*

**Lightweight, Close-Contact
Performance Saddles with a
Versatile Fit System in
4 Great Models**

**970-231-3299
info@trailwisesaddles.com**



**The Pioneer
Endurance
Saddle
\$1995
Raffle Model
for 2015**

Proud NATRC Sponsor



Important information regarding year-end awards.

The ride year ends the second Sunday in November, November 9, 2014. FOR ELIGIBILITY FOR YEAR END AWARDS, IT IS THE RIDER'S RESPONSIBILITY TO HAVE THE FOLLOWING REQUIREMENTS COMPLETED AS INDICATED BY NOVEMBER 9, 2014.

- (1) NATRC Membership dues must be received and
- (2) Horse's accurate breed information must be **on file with the NATRC Office.** www.natrc.org
- (3) In addition, National breed associations sponsoring year-end awards require that all the equines must be registered with the "association" and "participant(s)" must maintain their "association" membership.

Any doubt? Email Laurie (natrc@natrc.org) for NATRC membership verification and Cheri (Jeffcoat.cheri@gmail.com) or Colleen (colleenw@myedl.com) for breed verification. Contact your own breed association if you have questions for them.

**For
the
current
ride
schedule,
log on to
www.natrc.org**

Reminder

If a NATRC horse (that has competed) has been bought or sold, the mileage will not go with that horse unless the buyer or seller notifies the National Office that the horse has changed hands. We need the current and past owners' names, breed and

registration number (if applicable) in order to move the mileage to the new owner.

If you change your name, please notify the National Office so we can put your mileage with your current name.

If you see that your name or your horse's name is incor-

rect in the *Hoof Print* – please notify the National Office and ask for a correction. The RMS is a privately owned and maintained system. If you corrected a name on the RMS System, it will NOT be corrected on the National database until you notify us of the change.

Proposed Rule Changes for 2015

Presented at the NBOD meeting, February 20, 2014

Wording will be finalized at the NBOD meeting July 12, 2014
Voting on the proposals will be at the NBOD meeting November 8, 2014
Changes are indicated in **bold**.

SECTION 3 - MANAGEMENT OF RIDES

- A. Ride Management
 - 1. Ride Chair: This position is the chief executive of the ride.
 - 2. Trailmaster(s): The trailmaster may be the same as the Ride Chair. This person is responsible for all the matters pertaining to the trail.
- B. Ride Officials
 - 1. Ride Secretary: The primary executive assistant who is responsible for all of the ride correspondence, records, bookkeeping and reports.
 - ~~2. **Stable Manager: This person must maintain surveillance of the stable area while the horses are in camp.**~~
 - 8. **If the horses are stabled in an area apart from the riders, such as in stalls in a shed row or barn, then a Stable manager may be required to assure the safety of the horses overnight. Several people may split this duty so that each can get some sleep. Otherwise riders are responsible for monitoring their horses overnight.**

Purpose: To remove this paragraph from the rulebook. We are leaving ourselves open to protest or suit if we claim to have Stable Managers and don't. Eliminate the requirement for a Stable Manager in the Rule Book, but leave a suggestion that one might be used in circumstances that have the horses separate from the riders overnight.

SECTION 4 – DIVISIONS, CLASSES, AND ELIGIBILITY

Current rule reads:

Section 4-Divisions, Classes, and Eligibility:

- A. Divisions
 - 3. Competitive Pleasure
 - e. Class
 - (1) No weight limitations apply.
 - (a) this division will consist of one class in horse (combining HWT, LWT, and JR riders)
 - (b) this division will consist of one class in horsemanship (combining HWT, LWT and JR riders)

Proposal #1 – Change to Read:

Section 4-Divisions, Classes, and Eligibility:

- B. Divisions
 - 3. Competitive Pleasure
 - e. Class
 - (1) No weight limitations apply.
 - ~~(a) this division will consist of one class in horse (combining HWT, LWT, and JR riders)~~
 - ~~(b) this division will consist of one class in horsemanship (combining HWT, LWT and JR riders)~~
 - (2) This division will consist of two classes in horse. Competitive/ Pleasure and Competitive/ Pleasure Senior (for riders age 50 and over as of the start of the ride season).
 - (3) This division will consist of two classes in horsemanship. Competitive/ Pleasure and Competitive/ Pleasure Senior (for riders age 50 and over as of the start of the ride season).

Proposal #2 – Change to Read:

Section 4-Divisions, Classes, and Eligibility:

- B. Divisions
 - 3. Competitive Pleasure
 - e. Class
 - (1) No weight limitations apply.
 - ~~(a) this division will consist of one class in horse (combining HWT, LWT, and JR riders)~~
 - ~~(b) this division will consist of one class in horsemanship (combining HWT, LWT and JR riders)~~
 - (2) This division will consist of two classes in horse. Competitive/ Pleasure (CP) and Competitive/ Pleasure advanced (CPA). Any horse having won 10 or more firsts in CP, or having competed in the Open division in any previous ride season will be eligible for Competitive/ Pleasure Advanced only and not Competitive/Pleasure.
 - (3) This division will consist of two classes in horsemanship. Competitive/ Pleasure (CP) and Competitive/Pleasure Advanced (CPA). Any rider having won 10 or more firsts in CP, or having competed in the Open division in any previous ride season will be eligible for Competitive/ Pleasure Advanced only and not Competitive/ Pleasure.
 - (4) Any horse/rider team may enter CPA if they so choose.

Purpose: This second option gives the ability to divide CP division by skill level rather than age. CP would be a progression from Novice. CPA would be a progression from CP. Open would be a progression from CPA.

Purpose: to recognize the importance of Competitive/ Pleasure Division and provide enhanced avenues for development of skill levels, success and recognition within NATRC.

(Continued on [page 24](#))

(Continued from [page 23](#))

SECTION 6 – JUDGING

6 B 1. Reads:

1. Condition 40%: The evaluation of condition shall include, but not be limited to, the following: fatigue, P&R recovery, attitude and willingness, muscle soreness, mucous membrane, myoglobinuria, thumps, hydration and capillary refill, gut sounds, colic, respiration character, sweat and salivation, coordination, eating and drinking, etc.

Change to read:

1. Condition 40%: The evaluation of condition shall include, but not be limited to, the following: P&R recovery, **indicators of hydration status (skin tenting, mucous membrane, capillary refill, and jugular refill), bowel sounds, muscle tone, anal tone, and movement**, attitude and willingness. **Other parameters to evaluate may include thumps, colic, CRI (cardiac recovery index), fatigue, myoglobinuria** muscle soreness, **muscle cramping**, coordination, **urine color**, respiration character, sweat, salivation, eating and drinking, etc.

Purpose: The Cardiac Recovery Index (CRI) has been used as an optional tool to help evaluate the overall status of the horse's condition. A useful measurement of fatigue, it can be part of the end-of-day exam. Including CRI in the parameters listed to evaluate condition would help alleviate surprises for riders.

In addition, rearranging the paragraph would put those parameters used on the scorecard together. "Fatigue" can be deleted as the whole paragraph is about fatigue. "Myoglobinuria" can be replaced with "urine color." Thumps" and "colic" can be deleted as they are included on the back of the scorecard as criteria for a horse to be pulled.

SECTION 9 – AWARDS

1. Add CP National Championship between Open National Championship (B.2. G and Junior National Championship (B.2. H)

COMPETITIVE/ PLEASURE NATIONAL CHAMPIONSHIP: In the Competitive/ Pleasure class a horse shall be declared a National Champion when all the following requirements are met within the first 12 rides officially started in the same year. Type A ride counts as 1 ride, Type B ride counts as ½ ride. The horse and rider team shall be considered officially started when timed out on the first day of the ride.

- (1) Awarded two firsts or one first and two second placings from any ride type.
- (2) Awarded the first or second placing from any ride type in any two states or two regions, or is awarded a national placing in HIGH POINT COMPETITIVE/ PLEASURE HORSE.
- (3) Accumulated 75 points.

Horses competing for a Competitive Pleasure National Championship award must be at least 60 months of age.

(Continued on [page 25](#))

Custom Trailers Without the Custom Price!

HORSE PRO TRAILERS



A family owned business, we take pride in having quality trailers for sale and helping our customers meet their trailer needs. As horse folks, we know what makes a trailer convenient and safe for hauling. We love what we do!

Services: financing, delivery, consignment, trades, maintenance & repair.

Visit our website, email, call or just drop in to see our inventory or to discuss a custom trailer built just for you! Ask for Sheri.



'14 Bee 2h SL BP,
dr rm, 7' tall,
\$6,795



'14 Platinum 3H SL GN,
wt dr, stud div,
(add Wkndr pkg later)
\$26,395



'14 4Star 2H SL GN, insul
roof, wt dr, lg dr rm,
sale \$17,995

Manufacturers we carry - New and Used Inventory



www.horseprotrailers.com
horseprotrailers@yahoo.com 678.557.7165
6830 Browns Bridge Rd, Gainesville, GA 30506

GoodSearch And GoodShop

NATRC can receive one penny for each Internet search using GoodSearch as the search engine. You wouldn't think that could add up to much, but it does. And you can shop using GoodShop, which includes all the big retailers, with up to 30% going to NATRC. Turn your search and shopping into dollars. If you aren't already, please consider going to:

www.GoodSearch.com

and setting North American Trail Ride Conference-NA-TRC (Sedalia, CO) as your preferred charity.

- (1) Registered horses are considered 60 months of age as of actual foaling date on the registration papers.
 - (2) Unregistered horses are considered to be of eligible age if they have a "full mouth" (all permanent incisors having erupted and are in wear) as determined by the veterinary judge.
2. Delete CP High Average Horse and Horsemanship and Replace with CP High Point Horse and Horsemanship

k. **HIGH AVERAGE COMPETITIVE/PLEASURE HORSE:** These awards are presented to the Competitive/Pleasure Division horses which have the highest average score rather than the highest number of points.

- (1) First through sixth place will be awarded.
- (2) Horses competing for this award must officially start on a minimum of six rides during the year, which must include an out-of—state or out-of-region ride of any ride type. Type A ride counts as 1 ride, Type B ride counts as ½ ride. The horse and rider team shall be considered officially started when timed out on the first day of the ride.
- (3) Only the first 12 rides officially started will count. Type A ride counts as 1 ride, Type B ride counts as ½ ride.
- (4) A rider must be a current NATRC member prior to the start of a ride for the ride to be credited.
- (5) Every ride which the horse officially starts during the year will count, regardless of placing or finishing, provided it is entered in the declared division.
- (6) In the event of a tie for any place in the high average scores at the end of the year, the tiebreaker will be the horse that has won first place on the most number of rides of any ride type. If the tie persists, then the most number of seconds will be used. Each placing will then be used in turn until the tie is broken. If the tie persists, then the tied horses will each be awarded the same place.
- (7) The percentage score is calculated by dividing the individual horse's score by the highest Competitive/Pleasure horse score on that ride. The average score of each horse shall then be determined by adding the "percentage scores" from each ride officially started and dividing by the number of rides of any ride type officially started.

k. **HIGH POINT COMPETITIVE/ PLEASURE HORSE:** Points shall be credited to horses for the purpose of determining annual high score awards in Competitive Pleasure first through sixth place. Only the first 12 rides officially started will count. Type A ride counts as 1 ride, Type B ride counts as ½ ride. The horse and rider team shall be considered officially started when timed out on the first day of the ride. These criteria will be used for the purpose of determining various championships and additional awards which may be considered in the future.

Horses competing for High Point Competitive/ Pleasure award must be at least 60 months of age.

- (1) Registered horses are considered 60 months of age as of actual foaling date on the registration papers.
- (2) Unregistered horses are considered to be of eligible age if they have a "full mouth" (Continued on [page 26](#))

NORTH AMERICAN TRAIL RIDE CONFERENCE



2015 National Raffle

TRAILWISE Pioneer Endurance SADDLE

\$1,900 Value!



Raffle Tickets

\$5 each or 5 for \$20

On sale after 2014 drawing

Saddle donated by

www.trailwisetack.com

Thanks to Michelle Smith

Drawing held at 2015 National Convention

www.natrc.org



303-688-1677

(all permanent incisors having erupted and are in wear) as determined by the veterinary judge.

I. HIGH AVERAGE

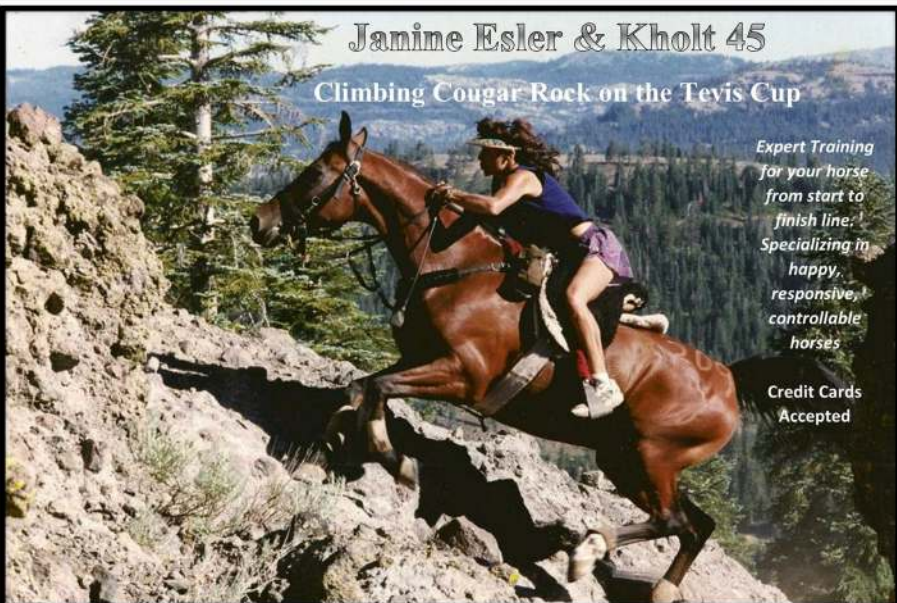
COMPETITIVE/PLEASURE HORSEMANSHIP: These awards are presented to the Competitive/Pleasure Division riders who have the highest average horsemanship scores rather than the highest number of points.

- (1) First through sixth place will be awarded.
- (2) Riders competing for this award must officially start on a minimum of six rides during the year, which must include an out-of-state or out-of-region ride of any ride type. Type A ride counts as 1 ride, Type B ride counts as 1/2 ride. The horse and rider team shall be considered officially started when timed out on the first day of the ride.
- (3) Only the first 12 rides officially started will count. Type A ride counts as 1 ride, Type B ride counts as 1/2 ride.
- (4) Every ride which the rider officially starts during the year will count, regardless of placing or finishing, provided it is entered in the declared division.
- (5) In the event of a tie for any place in the high average scores at the end of the year, the tie breaker will be the rider that has won first place on the most number of rides of any ride type. If the tie persists, then the most number of seconds will be used. Each placing will then be used in turn until the tie is broken. If the tie persists, then the tied riders will each be awarded the same place.
- (6) The percentage score is calculated by dividing the individual rider's score by the highest Competitive/Pleasure horsemanship score on that ride. The average score of each rider shall then be determined by adding the "percentage scores" from each ride officially started and dividing by the number of rides of any ride type officially started.

- I. HIGH POINT COMPETITIVE PLEASURE HORSEMANSHIP: Points shall be credited to riders for the purpose of determining annual high score awards in Competitive Pleasure, first through sixth place. Only the first 12 rides officially started will count. Type A ride counts as 1 ride, Type B ride counts as 1/2 ride. The horse and rider team shall be considered officially started when timed out on the first day of the ride. These criteria will be used for the purpose of determining various championships and additional annual awards which may be considered in the future.

Janine Esler & Kholt 45

Climbing Cougar Rock on the Tevis Cup



Expert Training
for your horse
from start to
finish line!
Specializing in
happy,
responsive,
controllable
horses

Credit Cards
Accepted

For Training Info: Esler Arabians
(916) 652-8937 * Esler.Arabians@gmail.com * www.EslerArabians.net

Spotted Saddle Horse Breeder's & Exhibitors Assoc.

Outreach Incentive Program

Free Registration With Membership

Start Earning Points for Year End Awards



For More
Information Contact
SSHBEA

PO Box 1046, Shelbyville, TN 37162 931-684-7496

WWW.SSHBEA.ORG

3. Add Novice High Point Horse and Horsemanship

m. HIGH POINT NOVICE HORSE: Points shall be credited to horses for the purpose of determining annual high score awards in each Novice class (i.e., HWT, LWT, JR), first through sixth place. Only the first 6 rides officially started will count. Type A ride counts as 1 ride, Type B ride counts as 1/2 ride. The horse and rider team shall be considered officially started when timed out on the first day of the ride. These criteria will be used for the purpose of determining various championships and additional awards which may be considered in the future.

n. HIGH POINT NOVICE HORSEMANSHIP: Points shall be credited to riders for the purpose of determining annual high score awards in each Novice class (i.e. HWT, LWT, JR), first through sixth place. Only the first 6 rides officially started will count. Type A ride counts as 1 ride, Type B ride counts as 1/2 ride. The horse and rider team shall be considered officially started when timed out on the first day of the ride. These criteria will be used for the purpose of determining various championships and additional annual awards which may be considered in the future.

You'll Pass

By Kay Lieberknecht, Region 1

When riding in a group, one of your greatest challenges can be passing or being passed. Here are some tips for passing this test of your bravery, communication with your horse and other riders, thoughtfulness, and (un?) common sense.

I should have put “communicating” first in the above list, especially when my two junior riders and I were late coming in at a recent competitive trail ride. The road was wide and other riders were walking along on the other side, so I gave the go-ahead and our four horses passed at a brisk trot and a couple of canters, with several feet between us and the “slow-pokes”. But those other riders and horses were not expecting us to pass! Imagine what could’ve happened if those were not seasoned horses and riders accustomed to rude rookies!

What we should have done is first make sure we were in good control of our horses and that all the horses we wanted to pass were moving along calmly. Then seeing that it was open and safe to both sides of the riders we wanted to pass, we should have hollered out, “Can we pass on your left?” We should have waited for a response before beginning to pass at only a slow trot. Not the fun race to the finish, but . . .

Choosing which side to pass on is part of the fun. The rule should be that the one wanting to pass gets the scary side, which is the downhill/rutted/rocky/poison oak/cactus side, right? If it's some

wide road probably you should figure to pass on the left if you live in the United States, but switch that for Britain or Japan.

What if the trail is narrow? Practice checking back your horse to keep several horse lengths between them and you and ask the riders ahead if they'd be able to watch for the next opportunity to safely pull over so you can pass. When you do pass, thank them profusely and compliment their horses, too.

Notice I said “several” horse lengths. If you are riding with a rider on a familiar horse, you may be able to follow one horse length behind on wide, flat trail at a walk, increasing that distance for additional speed or more difficult terrain. But following an unfamiliar horse closely at all can drive that horse and rider to nervous insanity. Sure, they may let you pass, but what will be the toll?

No one wants to get kicked, so with passing you have to have a plan for prevention. Putting a red ribbon in your horse's tail if they have a reputation for kicking is a good warning, but still . . . positioning helps more. Even if your horse “never kicks,” consider the following:

A horse can't really kick if their head is slightly toward the horse they're passing, rump slightly away from them. So before you pass or are passed, use rein and leg pressure on the side closest to the other horse to turn your horse slightly toward them. If you pull over to be



Photo by Gina Spangler, used with permission

passed, even by a vehicle, you may be able to really turn to face them, thus clearly communicating that any kicking by your horse is prevented.

Another thing you might have to pass is a big poison oak plant, or some scratchy bushes, or a steep drop-off on one side. Our intuition may tell us to turn our horses away from such threats, but inevitably when we do so they bulge our legs right into the hazard, maybe even dropping their own hind leg off the edge. The solution is to use leg and rein pressure to turn your horse *toward* the threat, so that they'll see that it'll be their tender nose that gets into it, not your leg.

I can't resist sharing this hard-learned lesson for your consideration: If you ever have to make a U-turn in a scary place, please turn so your horse faces the hazard. It is so much safer for a horse to sit back on its haunches while facing downhill than to scramble to keep its footing while facing uphill.

Be safe, have fun, and be respectful – the main three rules to have a good life!

Ride Results

How to read these results:
1st # = Horse's Placing / 2nd # = Rider's Placing
CO = Completion Only / P = Pulled / DO = Distance Only / DQ = Disqualified

Region 1

CMDTRA Mt. Diablo

5/3/2014 Region 1-CA
B-O/N/CP Total Riders: 33
Chair: Ellen Pofcher
Judges: Carol Meschter DVM,
Karel Waugh
Novice Sweepstakes: Sadie/
Heitman, Dani-97
Open Sweepstakes: Desert Reinbeau/
Meroshnekoff, Angie-98

Open Heavyweight

1/2 Amiraborr/Boicelli, Gene
2/1 YS Tyrone/Kroncke, Davern
3/3 Pistol Pete DF/Harvey, Laura

Open Lightweight

1/1 Desert Reinbeau/Meroshnekoff, Angie
2/5 Palistar/Swain, Stephanie
3/2 BVA Slate/Aden, Elizabeth

4/4 7th Heaven Star/Fuller, Lisa
5/6 Nura BLDa/Cunha, Heather
6/3 Sierra Sunshine/Stidolph, Donna
Confetti DYH/Broquard, Melissa

Novice Heavyweight

1/3 Sadie/Heitman, Dani
2/1 Cooper/Christiansen, Shiela
3/2 JD Jim Dandy/Downs, Beverly

Novice Lightweight

1/1 Kharinaa/Emsley, Laurel
2/4 CC's Honey Dew/Ballard, Tanya
3/3 Moondancers Prema Nina/
Bradley, Erin
4/2 Azzana BL/Jennings, Elizabeth

Novice Junior

1/2 Pipi/Smith, Megan
2/1 Carson EL Maj/Johnson, Karlie
3/4 Beauhemian/Anderson, Molly

4/3 Valentyne/Gipson, Savanah
P Denebaborr/McOsker, Jordan

Novice DO

Bella/Gianotti, Kerynn

Competitive/Pleasure

1/4 Marilyn The Mule/Pimentel, Joe
2/2 OM EL Shakeeb Dream/Dillard, Joe
3/1 OM EL Bilbao/York, Debbie
4/5 Fames Baydal BL/Fitts, Gary
5/3 Tony/Sterling, Valerie
6/ Downtown Sassy Brown/Tripp, Beth
/6 MK Vangouh/Mendenhall, Natalie
Sun-Ray's Mamma Jamma/
Brown, Tammy
Dream/Lieberknecht, Kay

Competitive/Pleasure DO

Kat Man D/Pimentel, Michelle

Cowboy Camp A

5/17-18/2014 Region 1-CA
A-O/CP Total Riders: 15
Chair: Jim Ferris
Judges: Leroy Burnham DVM, Karel Waugh
CP Combo- OM El Shakeeb Dream/Dillard, Joe
Open Sweepstakes: Desert Reinbeau/
Meroshnekoff, Angie98

Open Heavyweight

1/1 Amiraborr/Boicelli, Gene
2/2 Pistol Pete DF/Harvey, Laura
P YS Tyrone/Kroncke, Davern
P Tura Lura/Cannon, Linda

Open Lightweight

1/1 Desert Reinbeau/Meroshnekoff, Angie
2/2 Sierra Sunshine/Stidolph, Donna

3/3 Palistar/Swain, Stephanie
P 7th Heaven Star/Fuller, Lisa

Competitive/Pleasure

1/4 Om El Bilbao/York, Debbie
2/2 OM El Shakeeb Dream/Dillard, Joe
3/1 HM Raina Bo Surely/Schlerf, Haley
4/3 Tuscany Berlitz/Berlitz, Barbara
5/5 Diamond H Shalako/Vovchuk, Virginia
P Sun-Ray's Mamma Jamma/Brown, Tammy
P MK Vangouh/Boicelli, Victoria

Cowboy Camp B

5/17/2014 Region 1-CA
B-N Total Riders: 10
Chair: Jim Ferris
Judges: Leroy Burnham DVM, Karel Waugh

Novice Sweepstakes: Jim Dandy/
Downs, Beverly-98

Novice Heavyweight

1/2 Jim Dandy/Downs, Beverly
2/1 Cooper/Christiansen, Sheila

Novice Lightweight

1/DO Bodacious Tailfeathers/Lieberknecht, Kay
2/1 Moondancers Prima Nina/Bradley, Erin

Novice Junior

1/2 Pipi/Smith, Megan 2
2/3 Carson El Maj/Johnson, Karlie
3/1 Lucky Eddie/Johnson, Kirsten
4/6 Jezebel/Hunter, Jordan
5/4 Beauhemian/Anderson, Molly
6/5 Dream/Redin, Lily

"COMPETITIVE

TRAIL

RIDING -

Experience what
you and your horse

can achieve!"



SPORT HORSE PROGRAMS FOR REGISTERED AMERICAN SADDLEBREDS AND HALF SADDLEBREDS

The American Saddlebred Registry (ASR) provides annual recognition to registered American Saddlebreds and Half Saddlebreds participating in the Sport Horse disciplines of **Dressage, Combined Driving, Endurance / Competitive Trail, Eventing, Hunter/Jumper, and Reining.**

Apply online at www.saddlebred.com
or call (859) 259-2742 for more
information.



Ride Results

How to read these results:
1st # = Horse's Placing / 2nd # = Rider's Placing
CO = Completion Only / P = Pulled / DO = Distance Only / DQ = Disqualified

Region 2

Bumble Bee A

3/8-9/2014 Region 2-AZ
A-O/N/CP Total Riders: 31
Chair: Kandace French
Judges: Kay Gunckel DVM, Jerry Sims
Novice Sweepstakes: Dunit in the Paint/
Evans, Carol-95
Open Sweepstakes: Desert Reinbeau/
Meroshnekoff, Angie-96

Open Heavyweight

1/2 Gen's Rockin Shadow/Ward, Jim
2/3 Pistol Pete DF/Armer, Jean
3/1 Zackary/Peterson, Catherine
4/4 Shaker's Bum Magic/Liska, Sabrina
P Tango Sierra/Harvey, Laura

Open Lightweight

1/3 Desert Reinbeau/Meroshnekoff, Angie
2/1 Turnner's Wild Card/Ward, Lin
3/2 GE Spartan/Jarrett, Cheryl
P Sea Dragon/Walls, Lory

Open Junior

1/1 RA Chloe/Williams, Caden
2/2 Kaylee/Johnson, Karlie

Novice Heavyweight

1/4 Dunit in the Paint/Evans, Carol
2/1 Cats Flashy Feather/Hensley, Perry
3/3 Batistta/Masarsky, Megan
4/5 Ripley/Scott, Velma
5/2 Solid Country Gold Skye/Conne, Linda
P Cadence/Tucker, Nicole

Novice Lightweight

1/4 Rocky Top II/Koons, Pam
2/1 QCA Sonrey/Carl, Becky
3/2 Red Squirrel/Watson, Sarah
4/3 SCF Elatraz/Mueller, Nancy
P East Wood STF/Fowler, Marty

Novice Junior

1/1 Rocky/Floyd, Brianna
2/2 Bad News Charming Billy/Floyd, Elizabeth

Competitive/Pleasure

1/1 Pride's College Boy/Bray, Sherrie

2/2 Dash of Quick Silver/Simons, Sandie
3/4 MSA Chloe/O'Brien, Wava
4/3 Society Man's Sunny Boy/Zinkl, Debbie
CO Smokey Sedona/Kafka, Karen
P Downtown Sassy Brown/Tripp, Beth
P Sun-Ray's Mamma Jamma/Brown, Tammy

Bumble Bee B

3/8/2014 Region 2-AZ
B-N Total Riders: 4
Chair: Kandace French
Judges: Kay Gunckel DVM, Jerry Sims
Novice Sweepstakes: Mimosa/
Roush, Rebecca-91

Novice Heavyweight

CO Nikita/Fieldstone, Helena

Novice Lightweight

1/1 Mimosa/Roush, Rebecca
CO Mister Dibbs/Larsen, Rachel

Novice Junior

CO Star/McChesney, Michelle

Vail Lake A

4/5-6/2014 Region 2-CA
A-O/N/CP Total Riders: 14
Chair: Mary Jo Malone
Judges: Lucy Hirsch DVM, Karel Waugh
Novice Sweepstakes: Rocky/Floyd, Brianna-90
Open Sweepstakes: Desert Reinbeau/
Meroshnekoff, Angie-91.5

Open Heavyweight

2/1 Zackary/Peterson, Catherine

Open Lightweight

1/2 Desert Reinbeau/Meroshnekoff, Angie
2/3 Pride's Smoke and Mirrors/
French, Kandace
3/1 Sea Dragon/Walls, Lory

Open Junior

1/1 Kaylee/Johnson, Karlie
2/2 RA Chloe/Williams, Caden

Novice Heavyweight

1/1 Batistta Z/Masarsky, Megan

Novice Lightweight

1/1 QCA Sonrey/Carl, Becky

Novice Junior

1/2 Rocky/Floyd, Brianna
2/1 Bad News Charming Billy/Floyd, Elizabeth

Competitive/Pleasure

1/1 Pride's College Boy/Bray, Sherrie
2/4 Society Man's Sunny Boy/Zinkl, Debbie
3/2 HM Raina Bo Surely/Schlerf, Haley
4/3 Smokey Sedona/Kafka, Karen

Vail Lake B

4/5/2014 Region 2-CA
B-N Total Riders: 3
Chair: Mary Jo Malone
Judges: Lucy Hirsch DVM, Karel Waugh
Novice Sweepstakes: Bear/Salzbrunn, Marty-99

Novice Heavyweight

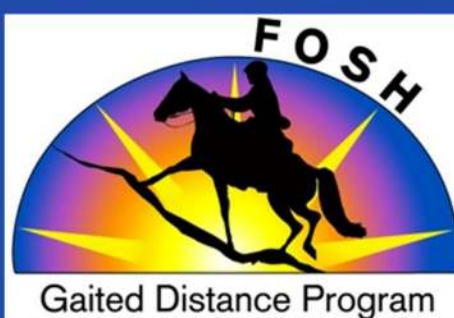
1/1 Bear/Salzbrunn, Marty
2/2 Lakota/Carr, Sherry
3/3 Joseph/Eddy, Jerusha



**Got gait?
Go FOSH!**
**Annual
and Mileage
Awards!**

**Get Ready . . .
JOIN US!**

**www.FOSHgated
sporthorse.com**



Honoring and recognizing
the achievements of gaited
horses who compete in the
sport of veterinarian
supervised distance rides.
These horses, riders, and
owners exemplify
the spirit of the
FOSH Sound Principles.

Region 3

Navajo Lake A

5/11-12/2014 Region 3-NM

A-O/N/CP Total Riders: 37

Chair: Cathy Cumberworth

Judges: Jerry Weil DVM, Becky Rogers.

CP Combo: Danner/Miller-Inman, Linell

Novice Sweepstakes: Rocky Top II/

Koons, Pam-96.5

Open Sweepstakes: Cedar Mesa Rushai/

Mason, Judy Wise-96

Open Heavyweight

1/2 Touch's Yeller Gold/Inman, Gary

2/6 Gen's Rockin Shadow/Ward, Jim

3/5 Magical Serenade/Halligan, Sherri

4/4 Peanut/Baker, Matt

5/1 Dee Bar/Westmoreland, Cheri

6/3 Bookcliff Mountain Fire/Bingham, Kenneth

Open Lightweight

1/6 Cedar Mesa Rushai/Mason, Judy Wise

2/3 Turner's Wild Card/Ward, Lin

3/5 Sea Dragon/Walls, Lory

4/4 Isis Khepri/Scott, Syndi

5/1 Phantoms Masquerade/Lane, Roxann

6/ GE Spartan/Jarrett, Cheryl

/2 Hot Saki/Smith, Terri

Sixes Peppy Lady/Feazell, Juleen

Goldseekers Wish/Figg, Julie

Open DO

Kenlyn Irish Rose/Young, Jane

Novice Heavyweight

1/2 MSA Chloe/Harris, Tia

2/1 Big Mac's My My/Wylie, Karen

P Anna's Rhett Buttler/Grabbe, Susan

Novice Lightweight

1/1 Rocky Top II/Koons, Pam

2/2 Not a chance/Vanpoolen, Kirt

P Escalante/Larsen, Lynda

P Nightts Shaddo/Howell, Perran

Novice Junior

1/1 Sweet Sue/Vanpoolen, Sydney

Competitive/Pleasure

1/2 Danner/Miller-Inman, Linell

2/4 Cadence/Tucker, Nicole

3/ JOR Picasso/O'Brien, Wava

4/ Rambler's Danny Rose/Carman, Jody

5/ Royal's Rock'N EZ Cinnabar/Garrett, Betty

6/3 Jack Said Take It EZ/Sumner, Susie

/1 Cedar Valley's Torden Fjell/

Ferganchick, Brandy

/5 Precious Easy Aces/Bingham, Kerry

/6 Smokey Sedona/Kafka, Karen

Bailey's Angel Baby/VanPoolen, Hannah

Tres Beau/Poulton, Jennifer

P Dash of Quick Silver/Simons, Sandie

DQ OcamiraCinsaBask/Lynn, Heloise

Navajo Lake B

5/11/2014 Region 3-NM

B-N/CP Total Riders: 5

Chair: Cathy Cumberworth

Judges: Jerry Weil DVM, Becky Rogers.

Novice Sweepstakes: Grey Moon/

Rubens, Mary-94.5

Novice Heavyweight

1/1 Grace/Daney, Devon

Novice Lightweight

1/1 Grey Moon/Rubens, Mary

2/2 Royal Cimmeron/Wester, Jennifer

Competitive /Pleasure DO

All The Rage/Brown, Kathy

Brazos Blaze/Brown, Jeff

For the current ride schedule, log on to www.natrc.org

The American Donkey & Mule Society, Inc

World's Largest Single Source of Information
and Services for All Types and Sizes of Longears



Five Registry Books:
 Miniature Donkeys**Mules**
 Race Mules**Zebras/Hybrids**
 Standard/Mammoth Asses

Versatility Program:
 Hall of Fame for Showing,
 Rides, Endurance,
 Performance Points

The BRAYER Magazine

100+ Pages Bi-Monthly (6/yr - free for members)
 Membership - \$27 USA, \$37 Canada, \$50 Overseas

ADMS, PO Box 1210, Lewisville, TX 75067
 (972) 219-0781 www.lovelongears.com



"Solutions to
 problems
 often come
 from knowing
 when to ask
 for help."

— Buck Brannaman

Region 4

Louisiana Purchase A

3/8-9/2014 Region 4-LA
 A-O/N/CP Total Riders: 18
 Chair: Jan Stewart
 Judges: Tamara Gull DVM, Shirley Parker
 Novice Sweepstakes: Foxy's Koda/
 Bass, Christa-85
 Open Sweepstakes: Ravenwood Royal Flag/
 Jewell, Jonni-83

Open Heavyweight

1/1 Ravenwood Royal Flag/Jewell, Jonni
 2/2 First Rayt Investment/Gould, Larry

Open Lightweight

1/2 Hes a Rockstar/Van Order, Barbie

2/4 NH Muscats Jewel/Swiss, Elaine
 3/1 RPH Queso/Hicks, Patti
 4/3 CWH The Sea King/Grey, Tomlyn

Novice Heavyweight

1/1 Foxy's Koda/Bass, Christa
 2/2 Tally/Griffin, Annette
 3/3 Friday/McLendon, Cindy
 P Employed at Longlast/Crane, Amy

Novice Lightweight

1/1 Sundae/Holm, Sharon
 2/2 Takoda/Lowrey, Kerry
 CO Painted Indian/Kale, Cara
 CO/DO Moonshadow/Galliher, Teresa

Novice Junior

P Opportunity Knox/Martin, Madeline

Competitive Pleasure

1/1 NKR April's Jewel/Zimmerman, Betsy
 2/2 Razmataz DBA/Bass, Carla Jo
 3/3 Phantoms Fiera/Yovich, Alice

Louisiana Purchase B

3/8/2014 Region 4-LA
 B-CP Total Riders: 2
 Chair: Jan Stewart
 Judges: Tamara Gull DVM, Shirley Parker

Competitive/Pleasure

1/1 Sarge/Accardo, Flash
 2/2 Azure BF/Bibb, Maranda

Hill Country Classic

3/23/2014 R4-TX
 B-O/N/CP Total Riders: 18
 Chair: Mary Ashley McGibbon
 Judges: Val Bixler DVM, Doanna Daniels
 Novice Sweepstakes: Painted Indian/
 Kale, Cara-98
 Open Sweepstakes: NH Muscats Jewel/
 Swiss, Elaine-98

Open Heavyweight

1/1 Ravenwood Royal Flag/Jewell, Jonni

Open Lightweight

1/1 NH Muscats Jewel/Swiss, Elaine
 2/3 OcamiraCinsaBask/Lynn, Heloise
 3/2 RPH Queso/Hicks, Patti

Novice Heavyweight

1/2 Belleton/Watkins, Tanya
 2/3 Jewell/Johnson, Marilyn
 3/4 Artex/Lejsal, Julie
 4/1 Croells Dancin' Kip/Smith, Gayna
 5/5 Selket Majinsky/Muench, Gayle

Novice Lightweight

1/1 Painted Indian/Kale, Cara

2/DO Moonshadow/Galliher, Teresa
 3/2 Blue Diamond Dealer/Muench, Fran
 4/3 Prince/Abdo, Laura

Novice Junior

1/1 Opportunity Knox/Martin, Madeline
 2/2 Moon's Movin' Out/Hebert, Maddie
 3/4 Scarlett/Abdo, Isabella
 4/3 Krunur from LoneStar/Baker, Myah

Competitive/Pleasure

1/1 Solidly Prinzzpled/Love, Kathleen

Pole Canyon A

4/12-13/2014 Region 4-TX
 A-O/N/CP Total Riders: 23
 Chair: Alanna Sommer
 Judges: Kay Gunckel DVM, Becky Rogers
 Novice Sweepstakes: Painted Indian/
 Kale, Cara-96
 Open Sweepstakes: Wildfire Storm/
 Miller, Dolly-94

Open Heavyweight

1/1 Ravenwood Royal Flag/Jewell, Jonni

Open Lightweight

1/1 Wildfire Storm/Miller, Dolly
 2/2 NH Muscats Jewel/Swiss, Elaine
 3/4 Hes a Rockstar/Van Order, Barbie
 4/3 Heza Trouble Makin' Buddy/Hapgood, Kris
 P Sea Dragon/Walls, Lory
 P Nellie's Last Tango SC/Lucht, Becky

Open Junior

1/1 RA Chloe/Williams, Caden

Novice Heavyweight

1/1 Croells Dancin' Kip/Smith, Gayna
 2/3 Selket Majinsky/Muench, Gayle
 3/2 Employed at Longlast/Crane, Amy

Novice Lightweight

1/1 Painted Indian/Kale, Cara
 2/2 Haidaseeker Playboy/Caudill, Andrea
 3/DO Moonshadow/Galliher, Teresa

Competitive/Pleasure

1/5 Calamity Jane's 44 Magnum/Hagler, Linda
 2/2 Tribute to Liberty/Yovich, Alice
 3/1 NKR April's Jewel/Zimmerman, Betsy
 4/3 Solidly Prinzzpled/Love, Kathleen
 5/4 Gorgeous Dixie/Steinke, Maggie
 6/ Razmataz DBA/Bass, Carla Jo
 /6 Smokey Sedona /Kafka, Karen
 KHF Czarina/Key, Corry
 Hesatuffimpression/Murphree, Suzanne

Pole Canyon B

4/12/2014 Region 4-TX
 B-CP Total Riders: 4
 Chair: Alanna Sommer
 Judges: Kay Gunckel DVM, Becky Rogers

Competitive/Pleasure

1/2 Missie KVH/Taylor, Barbara
 2/1 Stormy White Magic/Vasquez, Louise
 3/3 Tonto BlackWinter CTA/Davis, Kensee
 P CSS Risky Leo Iceman/
 Dreadfulwater, LeeAnn

SPOTTED DRAFT HORSE SOCIETY



The Spotted Draft Horse Society, Inc. has been established to record, promote and define Spotted Draft Horses in our society.

The Spotted Draft Horse is a draft type horse with pinto/paint markings and we have established stud books to preserve breeding programs already in place.

Discover how wonderful SPOTS can be... Visit our website to become a Member Now!

WWW.SPOTTEDDRAFTS.ORG

Region 4, continued

Oklahoma Run for the Mustangs A

4/26-27/2014 Region 4-OK
 A-O/N/CP Total Riders: 43
 Chair: Kris Hapgood
 Judges: Carol Ormond DVM, Patsy Conner
 Novice Sweepstakes: Rico/
 Hoover, Rebecca-96
 Open Sweepstakes: Ravenwood Royal Flag/
 Jewell, Jonni-98

Open Heavyweight

1/2 Ravenwood Royal Flag/Jewell, Jonni
 2/4 Gen's Rockin Shadow/Ward, Jim
 3/5 WH Picos Cozmic/Brodersen, Shirley
 4/6 Touch's Yeller Gold/Inman, Gary
 5/1 Diamond's Sassy Stockings/Keene, James
 6/DO First Rayt Investment/Gould, Larry
 /3 L.L.Remington/Marston, Marilyn
 LuckyMan/Barton, Bobbie
 Smoke-N-Jaz's Big Man/Stich, Kay
 Goodnight's Masterpiece/Clayton, Gary
 P SF Silver Dragon/Jakopak, Summer
 P Spot Me Wild/Sylvara, Karen
 P Mika/Parys, Shari

Open Lightweight

1/3 Heza Trouble Makin' Buddy/Collins, Alyssa
 2/ Turner's Wild Card/Ward, Lin
 3/ Loco Motion/Baldwin, Sara
 4/5 Pistol Annie/Dollarhide, Patti
 5/1 Cito Mocha Raton/Cleveland, Trish
 6/ Nellie's Last Tango SC/Lucht, Becky
 /2 RPH Queso/Hicks, Patti
 /4 Wildfire Storm/Miller, Dolly
 /6 NH Muscats Jewel/Swiss, Elaine
 Shadow's Dancer C./Nore, Robin
 CO Wyntez Buddy/Roberts, Beverly
 P Tonto/Cleveland, Kayli
 P Princess Dina/Payne, Debbie

Novice Heavyweight

1/1 Rico/Hoover, Rebecca
 2/2 Express's Ghost D/McCullough, Sharon
 P Gold Rush's No Foolin/Keizer, Colleen
 P FFLil Bit Dunnit/Morris, Allison
 P Sterling/Puglisi, Arlene
 P Little Jet Fuel/West, Sharon

Novice Lightweight

CO Mary Jane/Seguin, Kristen
 P Cheyenne/Fearing, Donna
 P Peaches/Koontz, Susan

P Foxy's Travelin Osage Moon/
 Teeman, Rene

Novice Junior

1/3 Daisy/Paulie, BreAnna
 2/2 Sailor Shooting Star/DePrisco, Elyse
 3/4 Princess/Nelson, Takara
 4/1 Sweet Sensation D./Meek, Ally

Competitive/Pleasure

1/1 EZ Rocket WH/Stucky, Marla
 2/2 Dun Come Unzipped/Reynolds, Margaret
 P Danner/Miller-Inman, Linell

Oklahoma Run for the Mustangs B

4/26/2014 Region 4-OK
 B-CP Total Riders: 4
 Chair: Kris Hapgood
 Judges: Carol Ormond DVM, Patsy Conner

Competitive/Pleasure

1/1 Buster Cole/Cole, Ann
 2/4 Nick/Lackey, Linda
 3/3 Pancho Villa's Silver Breeze/Mobley, Carol
 4/2 Almira Nefous/Dreadfulwater, LeeAnn

Without a Trace A

5/3-4/2014 Region 4-TX
 A-O/N/CP Total Riders: 27
 Chair: Alice Yovich
 Judges: Kate Jacob DVM, Priscilla Lindsey,
 Patti Hicks-Apprentice
 Novice Sweepstakes: Opportunity Knox/
 Martin, Madeline-97
 Open Sweepstakes: First Rayt Investment/
 Gould, Larry-99

Open Heavyweight

1/1 First Rayt Investment/Gould, Larry
 2/2 Diamond's Sassy Stockings/Keene, James
 3/3 Victory CH/Moore, William

Open Lightweight

1/3 Loco Motion/Baldwin, Sara
 2/2 NH Muscats Jewel/Swiss, Elaine
 3/1 Sea Dragon/Walls, Lory
 4/5 Sundae/Holm, Sharon
 5/4 CWH The Sea King/Grey, Tomlyn

Novice Heavyweight

1/3 Belleton/Watkins, Tanya

2/5 Storm Monarchy/Shaaht, Teri
 3/1 Selket Majinsky/Muench, Gayle
 4/2 Shades/Moore, Vickie
 5/4 Blackwood Bey/Fazzino, Kim

Novice Lightweight

1/DO Moonshadow/Galliher, Teresa
 2/1 Painted Indian/Kale, Cara

Novice Junior

1/1 Opportunity Knox/Martin, Madeline
 2/2 Sum Tigger/Mcbride, Chloe
 3/3 Dance Inside The Sun/Sims, Brooke
 P Penny/Tharp, Rachel

Competitive Pleasure

1/5 Firecrackers Jose CP/Roberts, Linda
 2/1 Moon's Movin' Out/Sommer, Alanna
 3/2 Ellie/Tharp, Vicki
 4/ Smokey Sedona/Kafka, Karen
 5/3 NKR April's Jewel/Zimmerman, Betsy
 6/6 Buck/Shenkir, Marjorie
 /4 Skipper/Scott, Liz
 Arrow's Saltwater Taffy Scott, Lisa

Without a Trace B

5/3/2014 Region 4-TX
 B-N/CP Total Riders: 11
 Chair: Alice Yovich
 Judges: Kate Jacob DVM, Priscilla Lindsey,
 Patti Hicks-Apprentice
 Novice Sweepstakes: Koweta Call Me Lexxie/
 Gardiner, Wendy-99.5

Novice Heavyweight

1/2 Koweta Call Me Lexxie/Gardiner, Wendy
 2/3 TA Kholibrie/Powell, Kara
 3/1 Capril/Milligan, Misten

Competitive/Pleasure

1/ Princess Lola/Murphree, Suzanne
 2/3 Solidly Prinzpled/Love, Kathleen
 3/4 Sarge/Accardo, Flash
 4/2 Norfleets Escapade/Bivens, Marilyn
 5/1 Windchester/Stewart, Jan
 6/ Macarns American Beauty/
 Thurston, Dianna
 /5 Azure BF/Bibb, Maranda
 /6 Jasper/Deaton, Terri



Find us on:
facebook®

Region 5

Spanish Trail

3/8-9/2014 Region 5-FL
 A-O/N/CP Total Riders: 30
 Chair: Wendy Allen
 Judges: Mike Bridges DVM, Bill Sherfese
 Novice Sweepstakes: Stanley's
 Travis/Duchesne, Ariel-100
 Open Sweepstakes: Loco Motion/
 Baldwin, Sara-97

Open Heavyweight

1/2 Goodnight's Masterpiece/Clayton, Gary
 2/1 Victory CH/Moore, William

Open Lightweight

1/ Loco Motion/Baldwin, Sara
 2/6 Sunny Georgia/Lucas, Patty

3/1 SCF Cindy Lou Who/Riddick, Keri
 4/4 Mariah's Secret/Riley, Leigh
 5/3 Tommys Impressev Ace/Broughton, Regina
 6/2 Swiss Mocha/Riley, Paula
 /5 Danamye/Diaguila, Esther

Novice Heavyweight

1/2 Stanley's Travis/Duchesne, Ariel
 2/4 Major's Midnight Romeo/Knott, Renee
 3/6 Admiral/Duchesne, Margarita
 4/1 Shades/Moore, Vickie
 5/ Gabriel/Piezon, Sherry
 6/5 Pegasus/Morres, David
 /3 Ledo Bright Prince/Atkins, Lucy

Novice Lightweight

1/1 Carbon's Royal Belle/Lewis, Mary

2/3 Wrangler/Moore, Pam
 3/2 AAS Al Hamdani/Devouassoux, Sheri
 4/4 Cherokee/Dennis, Karen

Novice Junior

1/3 CL Go Warrior Go/Dornstadter, Autumn
 2/2 Winnie/Dornstadter, Aylie
 3/1 Forever Majestic/Moman, Haleigh

Competitive/Pleasure

1/1 Kings Lasting Legacy/Petelle, Patricia
 2/ Windstorm Clay/Mitchell, Thomas
 3/3 Heart's Desire/Pegram, Sandy
 4/5 Dusty Dawn's Little Lady/Lewis, Ray
 5/4 Mandella Bey/Chapman, Carolyn
 6/2 Prewitt/Scott, Lisa
 /6 Winnie/Horn, Juliana

Region Five Benefit A

3/22-23/2014 Region 5-GA
 A-O/N/CP Total Riders: 31
 Chair: Cindy Keen
 Judges: Stephanie Ostrowski DVM,
 Cheri Jeffcoat
 Novice Sweepstakes: Romeo O Romeo/
 Haglund, Pam-99
 Open Sweepstakes: Swiss Mocha/
 Riley, Paula-99

Open Heavyweight

1/1 Victory CH/Moore, William
 2/2 Goodnight's Masterpiece/Clayton, Gary

Open Lightweight

1/6 Swiss Mocha/Riley, Paula
 2/4 Prime Sensation WH/Findley, Martha
 3/1 SCF Cindy Lou Who/Riddick, Keri
 4/5 Danamye/Diaguila, Esther
 5/ Sunny Georgia/Lucas, Patty
 6/3 Tommys Impressev Ace/Broughton, Regina
 /2 Mariah's Secret/Riley, Leigh

Scatoaks Major Jake/Hall, Julie
 Flash of Lightening/Moulis, Jameson
 Loco Motion/Baldwin, Sara
 Raisin the Roof/Daniels, Michelle

Novice Heavyweight

1/3 Romeo O Romeo/Haglund, Pam
 2/1 Shades/Moore, Vickie
 3/2 Barbie/Gray, Kristen
 4/4 General/Dunne, Aimee
 5/5 Charlie/Dyer, Teresa
 P PH Twin Blue/Long, Amy

Novice Lightweight

1/3 Carbon's Royal Belle/Lewis, Mary
 2/2 Rowdy/Ward, Katie
 3/1 Alena Rae/Rogers, Andrea
 P Kite's Stormy Lady/Haley, Glynnis
 P Panchos Dee Victoria/Farrar, Alice

Novice Junior

1/1 Dusty Nickle/Crutchfield, Julianne

Competitive/Pleasure

1/1 Kings Lasting Legacy/Petelle, Patricia
 2/6 Dusty Dawn's Little Lady/Lewis, Ray
 3/2 Spotted Alen's Finale/Woodall, Courtney
 4/5 Bailey/James, Trish
 5/3 Heart's Desire/Pegram, Sandy
 6/4 Prewitt/Scott, Lisa

Region Five Benefit B

3/22/2014 Region 5-GA
 B-N/CP Total Riders: 5
 Chair: Cindy Keen
 Judges: Stephanie Ostrowski DVM,
 Cheri Jeffcoat
 Novice Sweepstakes: Lenox/Senecal, Anita-99

Novice Lightweight

1/2 Lenox/Senecal, Anita
 2/1 Talharabi/Gunzburger, Lindsay

Competitive/Pleasure

1/1 That's My George/Rand, Emily
 2/3 DIA Icon/Mount, Janell
 3/2 My Noble Ambition/Rand, Lori

Spring in Dixie A

4/12-13/2014 Region 5-AL
 A-O/N/CP Total Riders: 35
 Chair: Patty Lucas/Paula Riley
 Judges: Carrie Porter DVM, Kim Cowart
 Novice Sweepstakes: PH Twin Blue/Long, Amy-97.5
 Open Sweepstakes: Danamye/Diaguila, Esther-100

Open Heavyweight

1/1 Goodnight's Masterpiece/Clayton, Gary
 P Victory CH/Moore, William

Open Lightweight

1/1 Danamye/Diaguila, Esther
 2/2 Mariah's Secret/Riley, Leigh
 3/4 SCF Cindy Lou Who/Riddick, Keri
 4/6 Loco Motion/Baldwin, Sara
 5/3 Flash of Lightening/Moulis, Jameson
 6/5 Tommys Impressev Ace/Broughton, Regina
 P Prime Sensation WH/Findley, Martha

Novice Heavyweight

1/5 PH Twin Blue/Long, Amy
 2/1 Admiral/Duchesne, Margarita
 3/2 Shades/Moore, Vickie

4/3 Romeo O Romeo/Haglund, Pam
 5/4 Stanley's Travis/Duchesne, Ariel
 6/ RRF's Full Throttle/Curry, Donna
 /6 Major's Midnight Romeo/Knott, Renee
 Gabriel/Piezon, Sherry

Novice Lightweight

1/5 Coool Hand Luke/Gamble, Karen
 2/2 Tri-Mi Dealers Choice/Abbott, Cathy
 3/4 Beau/Garnes, Sherry
 4/3 AAS Al Hamdani/Devouassoux, Sheri
 5/6 Rowdy/Ward, Katie
 6/1 Wrangler/Moore, Pam

Novice Junior

1/1 Ace/Garnes, Jacob

Competitive Pleasure

1/2 Kings Lasting Legacy/Petelle, Patricia
 2/1 RCC Follow Me/Jones, Debbie T.
 3/ Heart's Desire/Pegram, Sandy
 4/DO W A Love Letters/Myers, Lee
 5/4 Spotted Alen's Finale/Keen, Cindy
 6/ Dusty Dawn's Little Lady/Lewis, Ray
 8/3 My Noble Ambition/Rand, Lori
 /5 Arrow's Saltwater Taffy/Scott, Lisa

/6 TR What's Smokin/Jones, Mark H.
 Bailey/James, Trish
 Mandella Bey/Chapman, Carolyn

Spring in Dixie B

4/12/2014 Region 5-AL
 B-N/CP Total Riders: 9
 Chair: Patty Lucas/Paula Riley
 Judges: Carrie Porter DVM, Kim Cowart
 Novice Sweepstakes: Jerry's Melody/
 Pendleton, Lydia-98.5

Novice Lightweight

1/1 Panchos Dee Victoria/Farrar, Alice
 2/3 Carbon's Royal Belle/Lewis, Mary
 3/5 Kite's Stormy Lady/Haley, Glynnis
 4/2 Hot Roddin to the Max/Pendleton, Carol
 5/6 Mallory/Miller, Elaine
 6/4 Cryin At The Bar/Miller, Jennifer

Novice Junior

1/1 Jerry's Melody/Pendleton, Lydia
 2/2 Illusion/Pendleton, Abigail

Competitive/Pleasure

1/1 Dakota Firestorm/Ostrowski, Stephanie

Region 5, continued

Uwharrie Forest A

4/26-27/2014 Region 5-NC
 A-O/N/CP Total Riders: 21
 Chair: Michelle Daniels
 Judges: Mike Bridges DVM, Cheri Jeffcoat
 Novice Sweepstakes: Alena Rae/
 Rogers, Andrea-100
 Open Sweepstakes: Prime Sensation WH/
 Findley, Martha-91

Open Lightweight

1/1 Prime Sensation WH/Findley, Martha
 2/3 Scatoaks Major Jake/Hall, Julie
 3/2 Swiss Mocha/Riley, Paula
 4/4 Sea Dragon/Walls, Lory

Novice Heavyweight

1/2 Dements Allens Ace/Cozzolino, Susan
 2/1 PH Twin Blue/Long, Amy
 3/3 Crazy Alice/Talbert, Ben

Novice Lightweight

1/1 Alena Rae/Rogers, Andrea
 2/2 FYF Reckless/Mathews, Barbara
 3/4 Khandleight/Gonzalez, Liara
 4/5 Jazzy's Little Girl/Hamrick, Miles
 5/3 Lexus Golden Tie L/Dukes, Mary

Novice Junior

1/1 Captian Kune/Evans, Natalie

Competitive/Pleasure

1/6 Dusty Dawn's Little Lady/Lewis, Ray
 2/3 Spotted Alen's Finale/Keen, Cindy
 3/1 Spirit of Spotted Alen/Woodall, Courtney
 4/5 Kings Lasting Legacy/Petelle, Patricia
 5/2 RCC Follow Me/Jones, Debbie T.
 6/4 TR What's Smokin/Jones, Mark H.
 Smokey Sedona/Kafka, Karen
 P Bazim/Halligan, Sherri

Uwharrie Forest B

4/26/2014 Region 5-NC
 B-O/N/CP Total Riders: 6
 Chair: Michelle Daniels
 Judges: Mike Bridges DVM, Cheri Jeffcoat
 Novice Sweepstakes: Ace/Garnes, Jacob-98
 Open Sweepstakes: Sunny Georgia/
 Lucas, Patty-97

Open Lightweight

1/1 Sunny Georgia/Lucas, Patty

Novice Junior

1/1 Ace/Garnes, Jacob

Novice DO

Jackson/Garnes, Sherry

Competitive/Pleasure

1/2 DIA Icon/Mount, Janell
 2/3 Scarlet/Wertz, Jennifer
 3/1 CMF Hallel/Hartness, Marilyn

Faye Whittemore A

5/10-11/2014 Region 5-AL
 A-O/N/CP Total Riders: 22
 Chair: Michelle Goza
 Judges: Mike Bridges DVM, Shirley Parker
 Novice Sweepstakes: A Fine Frenzy/
 Hicks, Alyssa-100
 Open Sweepstakes: Goodnight's Masterpiece/
 Clayton, Gary-96

Open Heavyweight

1/1 Goodnight's Masterpiece/Clayton, Gary
 2/2 Victory CH/Moore, William

Open Lightweight

1/2 SCF Cindy Lou Who/Riddick, Keri
 2/5 Loco Motion/Baldwin, Sara

3/3 Tommys Impressev Ace/Broughton, Regina
 4/1 Swiss Mocha/Riley, Paula
 5/4 Mandella Bey/Chapman, Carolyn
 P Mariah's Secret/Riley, Leigh

Novice Heavyweight

1/6 Zakreb Ogon/Wolf, Teresa
 2/3 Admiral/Duchesne, Margarita
 3/1 Shades/Moore, Vickie
 4/4 Maybe/Stephenson, Kimberly
 5/2 Romeo O Romeo/Haglund, Pam
 6/5 Stanley's Travis/Duchesne, Ariel

Novice Lightweight

1/1 A Fine Frenzy/Hicks, Alyssa
 2/2 Wrangler/Moore, Pam

Novice Junior

P Dusty Nickle/Crutchfield, Julianne

Competitive/Pleasure

1/3 Heart's Desire/Pegram, Sandy
 2/1 Kings Lasting Legacy/Petelle, Patricia
 3/2 Roxanne/South, Robin
 4/5 Arrow's Saltwater Taffy/Scott, Lisa
 5/4 Dakota Firestorm/Ostrowski, Stephanie

Faye Whittemore B

5/10/2014 Region 5-AL
 B-N Total Riders: 3
 Chair: Michelle Goza
 Judges: Mike Bridges DVM, Shirley Parker
 Novice Sweepstakes: Cool Hand Luke/
 Gamble, Karen-98

Novice Heavyweight

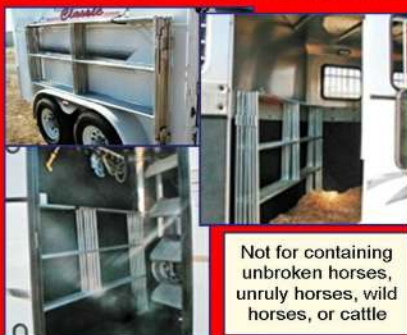
1/1 Pusher's Blue Treasure/Carraher, Kathy
 2/2 Barbie/Gray, Kristen

Novice Lightweight

1/1 Cool Hand Luke/Gamble, Karen

Travel with Confidence
 A safe and secure place for your horse.

Travel INC Corrals
 Lightweight Portable Corrals



Not for containing
 unbroken horses,
 unruly horses, wild
 horses, or cattle

- Constructed of 1" galvanized steel tubing for durability
- Panels & connectors notched & welded for strength & longevity
- Each panel 7'w x 4'h connects with a full length 4' steel pipe
- Each panel weighs only 15 pounds
- One person can assemble or disassemble & store
- Any location where panels interlock with 4' pin can be a gate
- Large 13' dia. standard corral size
- Up to 18' dia. & double corrals available
- Original owner lifetime guarantee

WWW.TRAVELNCORRALS.COM

Tracy, California 925/980-0235 Ask for
 Lynette or email travelncorrals@yahoo.com



Region 6

Nickers N Neighs A

5/3-4/2014 Region 6-KS
 A-O/N/CP Total Riders: 30
 Chair: Hope White, Vickie White
 Judges: Patrick Regier DVM, Norma Newton
 Novice Sweepstakes: T-Bone B Blacky/
 Ross, Kerri-97
 Open Sweepstakes: Mika/Parys, Shari-97

Open Heavyweight

- 1/1 Mika/Parys, Shari
- 2/3 L.L.Remington/Marston, Marilyn
- 3/5 Country's Magic Fox WH/
Hinkebein, William
- 4/2 Smoke-N-Jaz's Big Man/Stich, Kay
- 5/4 Mr. Chico Lindo/Smith, Yvonne

Open Lightweight

- 1/2 Pistol Annie/Dollarhide, Patti
- 2/3 Cito Mocha Raton/Cleveland, Trish
- 3/1 Shadow's Dancer C./Nore, Robin

Novice Heavyweight

- 1/1 KS Bluestem Lady Liberty/Hanson, Mary
- 2/2 Windy V/Vasa, Tammy
- 3/ KS Franks Banjet/Chaffin, Verona
- 4/5 Lethal Status/Ankersen, Sharron
- 5/3 IMA Red Bark Tex/Jakopak, Summer
- 6/6 Northdreams Diamond Jewell/
Johnson, Marilyn
- /4 Bartending For Money/Vasa, John
- /DO Little Richard CR/Braznell, Elizabeth

Novice Lightweight

- 1/1 T-Bone B Blacky/Ross, Kerri
- 2/4 Auli Sabah/Fischer, Jennifer
- 3/3 Little Jet Fuel/West, Sharon
- 4/2 Superlady Teton/Vernon, Katy
- 5/5 Jordan/Beckham, Diane
- P Neshaad-Midnight/Moore, Rebecca

Competitive Pleasure

- 1/2 EZ Rocket WH/Stucky, Marla
- 2/1 Razonn Trail Dancer/Colby, Mary
- 3/3 Skip-A-Head Festus/Murz, Julia

- 4/4 Winchester Charm/Wood, Mary Anna
- 5/5 Dun Come Unzipped/Reynolds, Margaret
- 6/6 Goodness Gracious/Childs, Maggie
- P DJ Maverick/Lysinger, Patricia
- P SC Akil Gassur/Brinck, Travis

Nickers N Neighs B

5/3/2014 Region 6-KS
 B-/N/CP Total Riders: 3
 Chair: Hope White, Vickie White
 Judges: Patrick Regier DVM, Norma Newton
 Novice Sweepstakes: Hungarian Jade/
 Sadler, Mel-98

Novice Heavyweight

- 1/1 Hungarian Jade/Sadler, Mel

Novice Lightweight

- 1/1 Ash Royal Statling Rose/Myers, Stacy

Competitive Pleasure

- P AM Micado's/Hauser, Jeanie

EKAHA Hill & Dale

5/17-18/2014 Region 6-KS
 A-O/N/CP Total Riders: 35
 Chair: Mary Colby
 Judges: Jerry Weil DVM, Frank Keeran
 CP Combo: EZ Rocket WH/Stucky, Marla
 Novice Sweepstakes: T-Bone B Blacky/
 Ross, Kerri-98.5
 Open Sweepstakes: Awesomes Fire N Ice/
 Wolgram, Ken-99

Open Heavyweight

- 1/1 Awesomes Fire N Ice/Wolgram, Ken
- 2/3 Mika/Parys, Shari

- 3/2 Diamond's Sassy Stockings/Keene, James
- 4/4 L.L.Remington/Marston, Marilyn
- 5/6 My Knightmare/White, Vickie
- 6/5 Country's Magic Fox WH/
Hinkebein, William
- Spot Me Wild/Sylvara, Karen

Open Lightweight

- 1/3 Cito Mocha Raton/Cleveland, Trish
- 2/2 NH Muscats Jewel/Swiss, Elaine
- 3/1 Sea Dragon/Walls, Lory
- 4/4 Shady Sunset WH/Licata, Mary
- 5/5 Shadow's Dancer C./Nore, Robin

Novice Heavyweight

- 1/4 Lethal Status/Ankersen, Sharron
- 2/3 KS Franks Banjet/Chaffin, Verona
- 3/1 Bartending For Money/Vasa, John
- 4/2 Windy V/Vasa, Tammy
- P Winston/Lehmann, Charlene

Novice Lightweight

- 1/2 T-Bone B Blacky/Ross, Kerri
- 2/3 Auli Sabah/Fischer, Jennifer
- 3/1 Superlady Teton/Vernon, Katy
- P Jordan/Beckham, Diane


Competitive/Pleasure

- 1/1 EZ Rocket WH/Stucky, Marla
- 2/4 D.M.'S Eye of The Tiger/Altwegg, Noreen
- 3/3 Fives Bert Harlan/Bouska, Alan
- 4/2 Jac Natalie/Hathhorn, Jackie
- 5/ Lucky Dream Catcher WH/Wallis, Christine
- 6/ Dun Come Unzipped/Reynolds, Margaret
- /5 Summer/Wolgram, Betty
- /6 Winchester Charm/Wood, Mary Anna
- SF Silver Dragon/Jakopak, Summer
- PS Sabres Shadow/Clapper, Tina
- The Soccross Marqueasa/Snow, Marilyn
- P Taking Over My Heart/Levinson, Rhonda
- P Smokey Sedona/Kafka, Karen

Competitive/Pleasure DO

- Goodness Gracious/Childs, Maggie

Educational Horsemanship DVDs BROUGHT TO YOU BY CHA!



✓ **Dr. Temple Grandin on Horse Behavior**

✓ **Pack and Trail Essentials**

✓ **Mounted Games**

✓ **Bits and Biting**

✓ **And Many More!**


✓ **Quick Corrections for Position**

✓ **Longe Line Lessons**

✓ **Saddle Fit**

✓ **Developing the Rider's Seat**

✓ **Jumping 101**



FOR A FULL LIST OF TITLES,
to find a riding instructor or to become a certified riding instructor:
WWW.CHA-AHSE.ORG OR CALL 859-259-3399

*"Safe,
 Fun,
 Challenging -
 Come Ride
 With Us!"*

NORTH AMERICAN TRAIL RIDE CONFERENCE

PO Box 224, Sedalia, CO 80135, 303-688-1677, Fax 303-688-3022
www.natrc.org, natrc@natrc.org



MEMBERSHIP FORM - RENEW, JOIN OR PURCHASE ITEMS ONLINE AT WWW.NATRC.ORG

Memberships run from January 1-December 31. We offer eight membership plans: four Regular; two Lifetime and two Platinum. The Platinum plans receive all the benefits of the Regular plans plus personal excess liability coverage with a \$1,000,000 policy limit.

CHECK PLAN DESIRED

REGULAR MEMBERSHIP: All memberships include: electronic national newsletter-*Hoof Print*, your region's newsletter, E-News subscription, eligibility for annual national and regional high score awards and championships, horse and rider mileage awards, reduced ride entry fees, sponsor discounts, enhanced member services, and automatic membership in your region.

- ___ **FAMILY**..... \$90 /yr Household of 1 or 2 adults & children under the age of 18 as of Jan 1 (2 votes)
___ **SINGLE** \$60 /yr Single adult member (1 vote)
___ **ASSOCIATE**... \$50 /yr Equine-related groups or businesses only (no vote)
___ **JUNIOR**..... \$40 /yr Single Junior member under age 18 (no vote)

LIFETIME MEMBERSHIP: One time membership payment.

- ___ **FAMILY**..... \$10,000 Household of 1 or 2 adults & children under the age of 18 as of Jan 1 (2 votes)
___ **SINGLE** \$ 5,000 Single adult member (1 vote)

PLATINUM MEMBERSHIP: Platinum members receive insurance benefits thorough Association Resource Group-ARG. Platinum members receive personal excess liability coverage with a \$1,000,000 policy limit. Coverage is for claims brought against members of NATRC (Platinum) arising from the use and /or ownership of a horse and for horse-related accidents involving third party bodily injury or property damage. Coverage will apply when engaged in any horse related activity, and coverage is in excess of any existing valid and collectible insurance. There is no deductible. Professional Liability is not included. Business exposures are excluded.

- ___ **FAMILY**..... \$130 /yr Household of 1 or 2 adults & children under the age of 18 as of Jan 1 (2 votes)
___ **SINGLE** \$ 80 /yr Single adult member (1 vote)

ANNUAL LIFETIME MEMBER PLATINUM UPGRADE: _____ \$20 Single _____ \$40 Family

NATRC Specialties (Optional)

- ___ Patch (inc. w/new membership). \$5.00
___ 10" Round NATRC Emblem Sticker.. \$5.00
___ 4" Round NATRC Emblem Sticker.. \$3.00

A Rule Book is free with your membership. To save NATRC \$\$\$, the Rule Book can be downloaded from www.natrc.org or a hard copy can be requested by checking here ____.

\$ TOTAL ENCLOSED _____ (Colorado residents please add 2.9% on Specialty Items)

Hoof Print will be delivered electronically. To receive a print copy, please add \$15 and check here: ☐

Please list first and last names, especially those with different last names, of all competing family members.

Name(s) _____
Jr(s) Birthdates _____
Street _____ City _____
State, Zip _____ Phone (_____) _____
Email _____

(WE REALLY NEED YOUR EMAIL FOR DELIVERY OF HOOFPRIINT. IT WILL NOT GO OUTSIDE OF NATRC. THANKS!)

New member? Will you share how you found out about NATRC? _____

***** Mail completed form and check to : NATRC, PO Box 224, Sedalia, CO 80135 *****



Specialized Saddles



Congratulates Sue Hedgecock and LZP Julioslastchance

Best
Condition

Haggin Cup Winner of the 2013 Tevis Cup



Photo By Merri Melde - Endurance.net

- * Lightweight
- * Narrow Twist
- * Close Contact
- * Comfortable

*Hand made
in the USA*



Sue rides in a
Specialized
Saddles
Trailmaster

Call for a FREE DVD

915-726-0550

Demos Available

SpecializedSaddles.com



RIDING WAREHOUSE

Your One-Stop Online Tack Shop

BIGGEST SELECTION - LOWEST PRICES - FAST & FRIENDLY SERVICE



FREE SHIPPING
\$5 2-DAY AIR
FREE RETURNS FOR 1 YEAR

Check Out What's New at RidingWarehouse.com

Training & Competition Logs by Sandra Adams - Feed-Through Fly Control
Rider's Sleeves Cooling UV Protection
CW-X Stabilyx Bras - Knixwear & FITS Seamless Underwear



"Like" Us & Save 10%!

www.RidingWarehouse.com

PROUD SPONSOR
OF NATRC



Provides an innovative combination of shock absorption and support.

The Upper

Leather and soft-weave fabric is lightweight yet durable to protect the hoof from rocks, roots and other trail hazards. Breathable mesh wicks moisture, allows full range of motion and shields the pastern joint area. Reflective details increase visibility in low light. A seamless mold between the upper and the bumper eliminates the need for stitching.

The Bumper

The robust, lightweight polyurethane bumper offers extreme pliability and high resilience. Located at the core of the boot, this flexible connection to the upper accommodates many hoof shapes and angles.

The Outsole & Cavity Cushions

Fabric and synthetic materials resist wear and increase stability beneath the midsole. Depressions within the outsole structure are filled with the softer midsole material to create an integrated cushion. The result is a close-to-the-ground fit that encourages proper movement.



The Seamless Integration of Flexibility and Durability

Hook & Loop Straps

Industrial strength hook and loop straps at front and back secure the boot on the hoof. These reversible straps allow for precise fit adjustments.

The Midsole

The flexible bumper and hardy outsole are molded together to form a supportive midsole for the hoof to stand on. This combination of shock absorption and support has never before been seen in a hoof boot.

Trail-Proven Tread

Canter through the trees and cross mountain streams with confidence using the most accomplished hoof boot tread on Earth. This trail-proven tread pattern excels in multiple disciplines and has won some of the most extreme long-distance horse events in the world.



Like Us on Facebook
facebook.com/easyboot



easycareinc.com
EasyCare
blog.easycareinc.com
800-447-8836